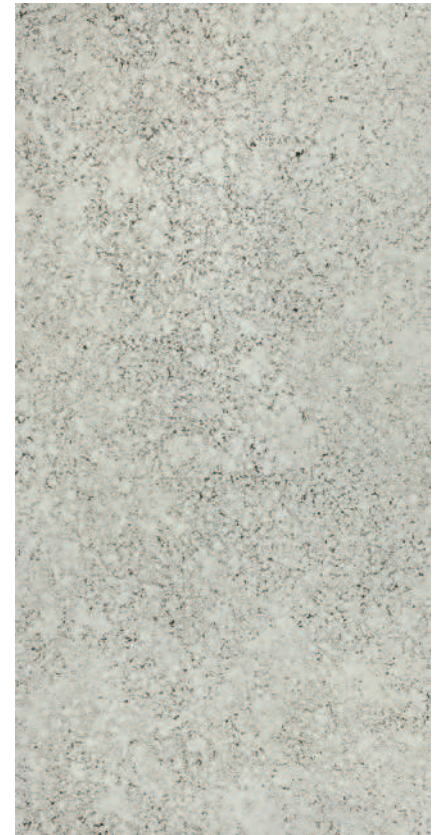


# Prodotti Products



# Specchi nel Tempo

< Antico Veneziano



Urano 1220x2400 mm

Antique Mirror nasce con l'obiettivo di produrre lastre "antichizzate" giocando su ossidazioni ed applicazioni di particolari procedimenti brevettati che restituiscono allo specchio quella magia che la perfezione tecnica gli sottrae. La collezione comprende decori con diverse tonalità di grigio e sfumature di colore per svariate esigenze e contesti di applicazione.

Misure standard di produzione: lastre di 1220x2400 mm, in spessore di 3, 4, 5 e 6 mm.  
Dati tecnici utili a pag.116 e 118.

# Specchi nel Tempo

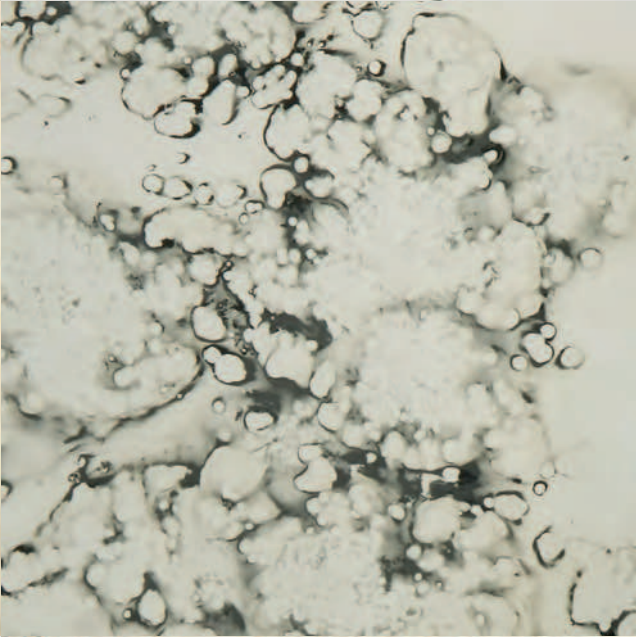
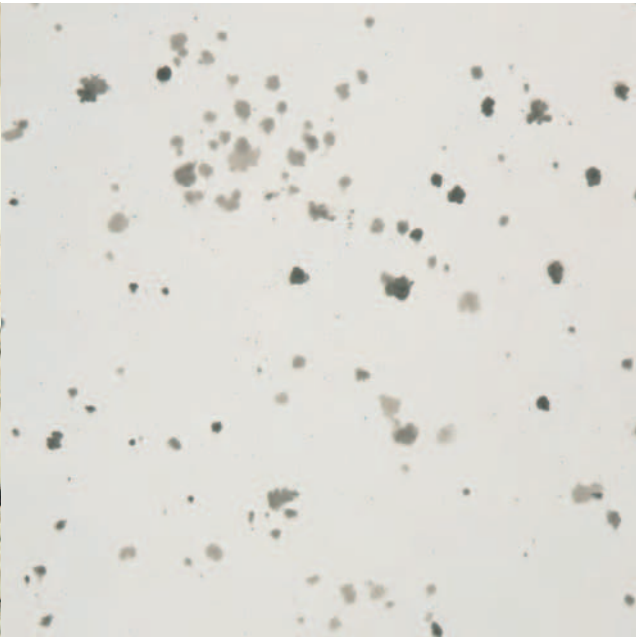
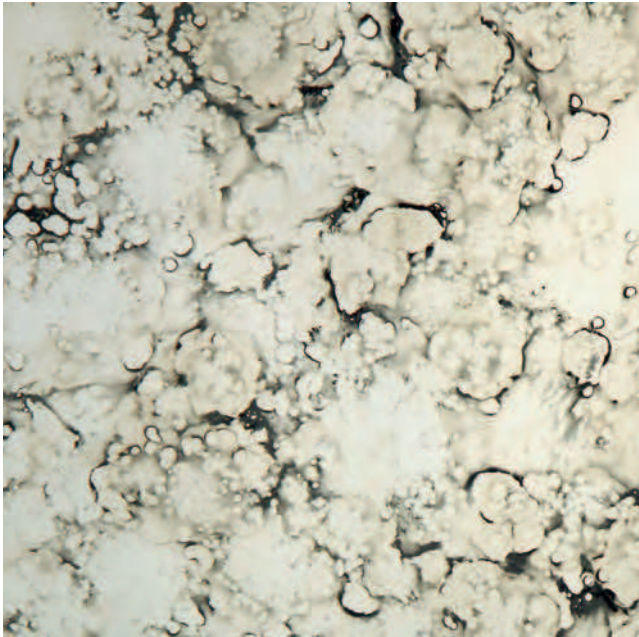
The goal of Antique Mirror is to create vintage glass sheets by using oxidation processes and applying particular patented procedures. We give back to the mirror the magic that is lost when mirrors are produced industrially. This product line offers various decorations with different tints of grey and shades of colours for any kind of need and a multitude of applications.

Standard production sizes: 1220x2400 mm sheets, available in thicknesses of 3, 4, 5, and 6 mm.  
Please find useful technical advice on page 116 and 118.



The photographs show life-sized decorations

Le immagini mostrano decori a grandezza naturale



1  
Bianco e Nero  
(Specchi nel Tempo)  
scale 1:1

2  
Grigio Argento  
(Specchi nel Tempo)  
scale 1:1

3  
Meteora  
(Specchi nel Tempo)  
scale 1:1

4  
Saturno  
(Specchi nel Tempo)  
scale 1:1

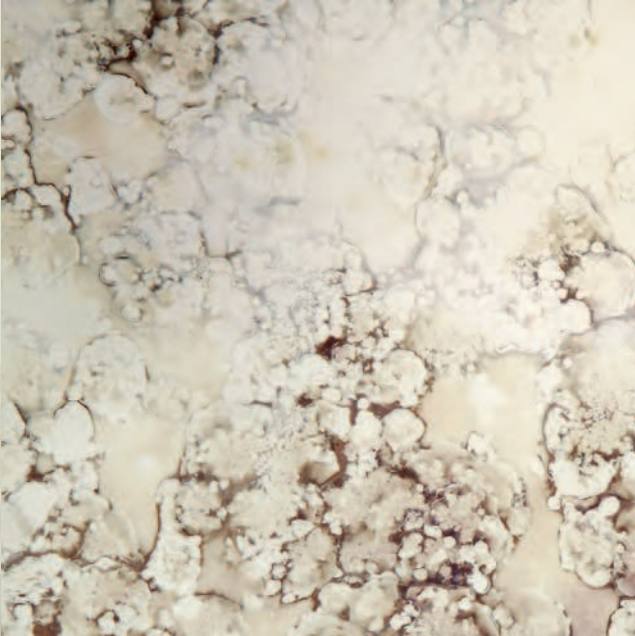
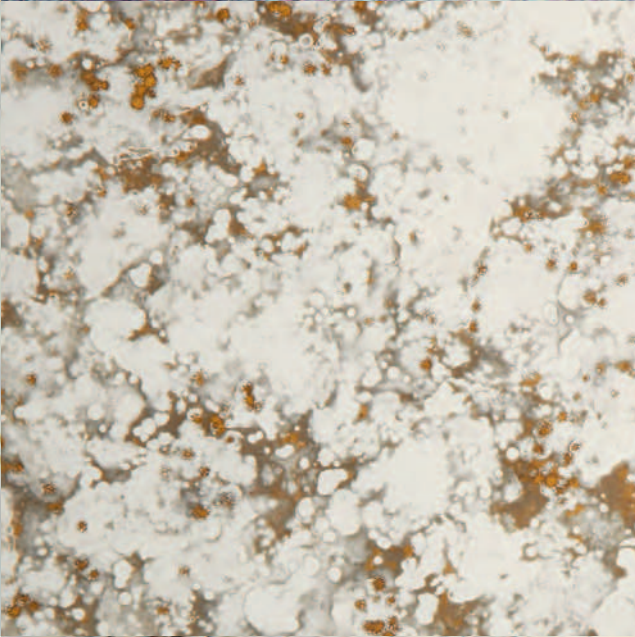
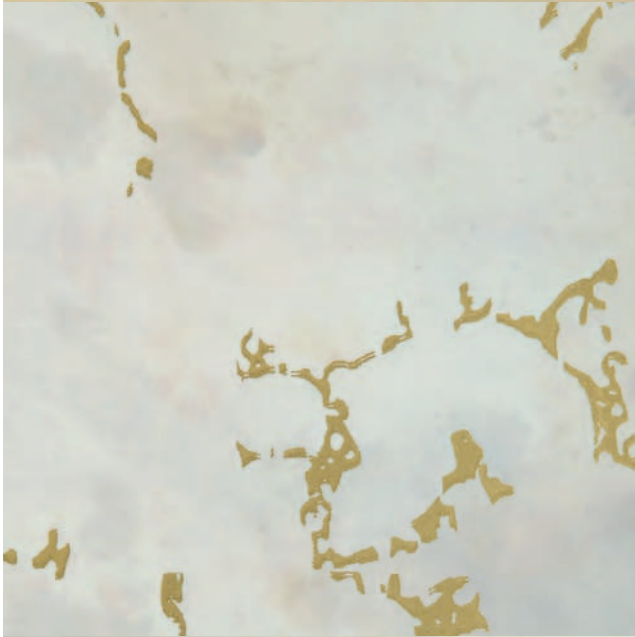
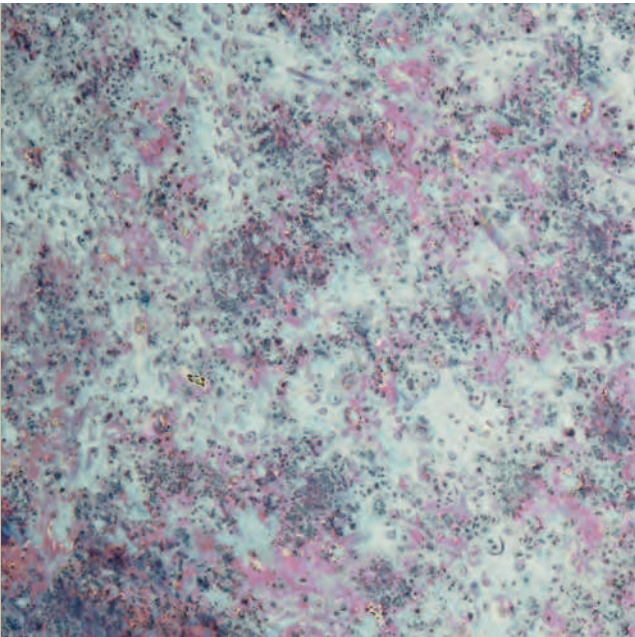
5  
Antico Veneziano  
(Specchi nel Tempo)  
scale 1:1

6  
Urano  
(Specchi nel Tempo)  
scale 1:1



The photographs show life-sized decorations

Le immagini mostrano decori a grandezza naturale



7  
Venere  
(Specchi nel Tempo)  
scale 1:1



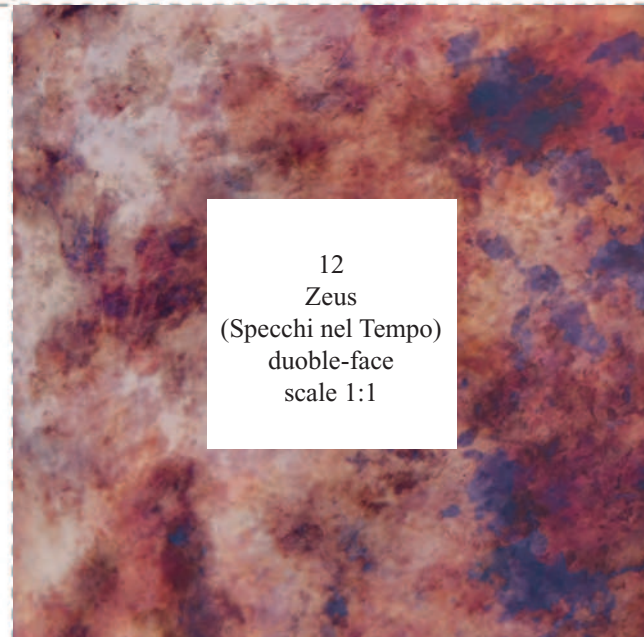
8  
Cometa  
(Specchi nel Tempo)  
scale 1:1



9  
Iride  
(Specchi nel Tempo)  
scale 1:1

10  
Apollo  
(Specchi nel Tempo)  
scale 1:1

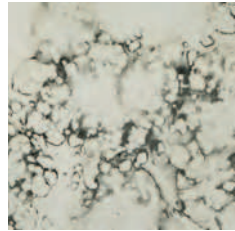
11  
Minerva  
(Specchi nel Tempo)  
scale 1:1



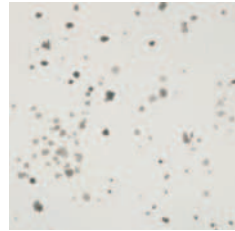
12  
Zeus  
(Specchi nel Tempo)  
double-face  
scale 1:1



1



2



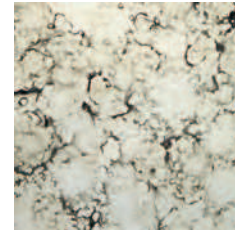
3



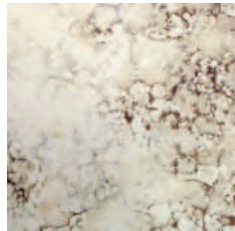
4



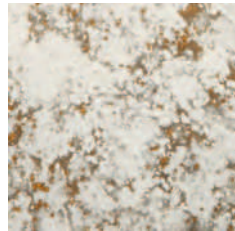
5



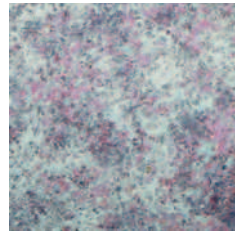
6



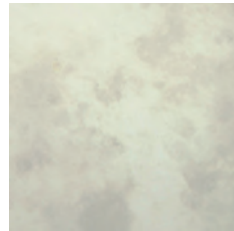
7



8



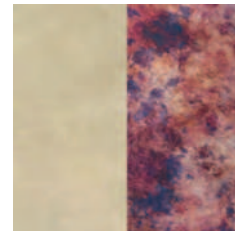
9



10



11

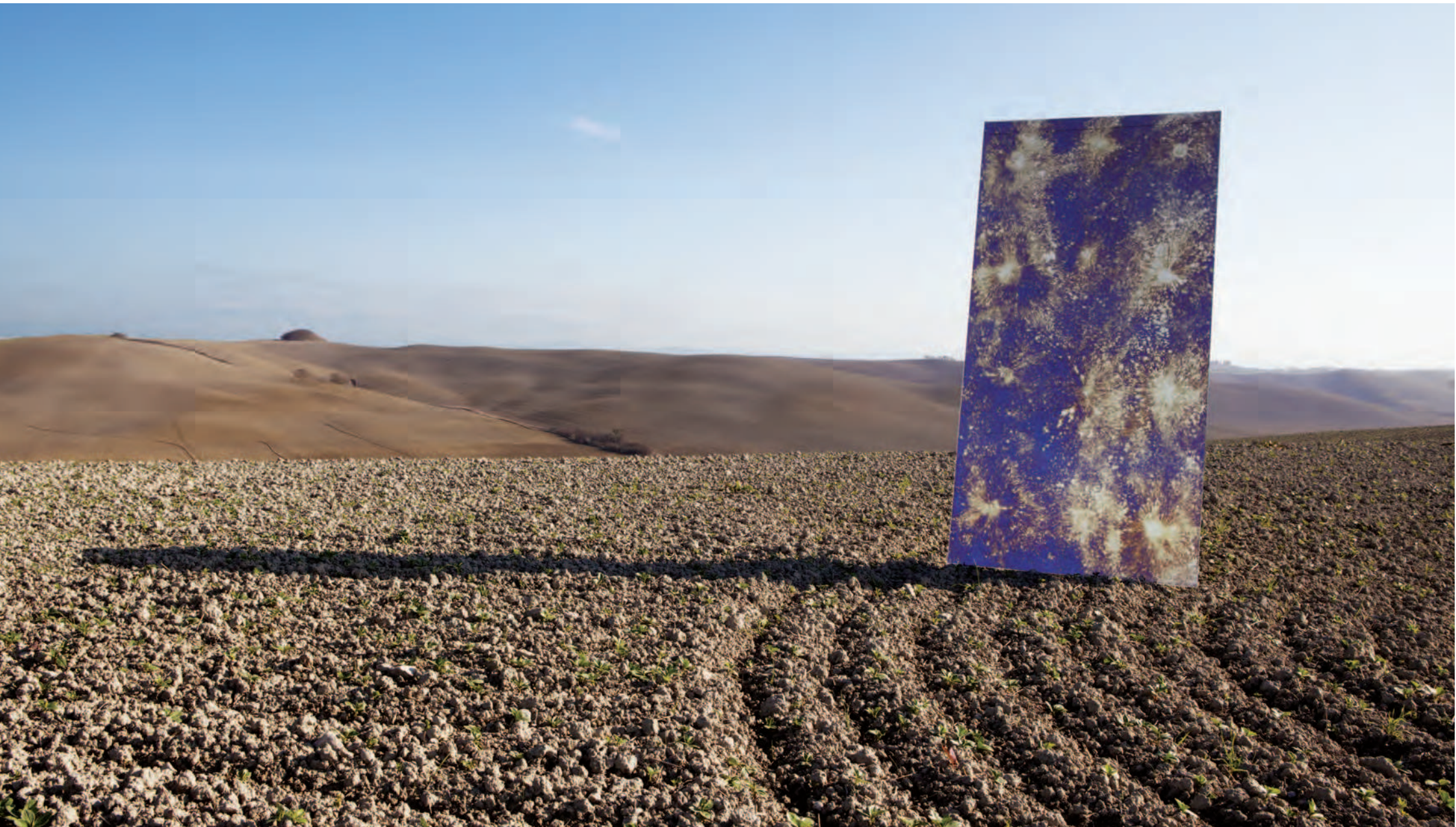


12

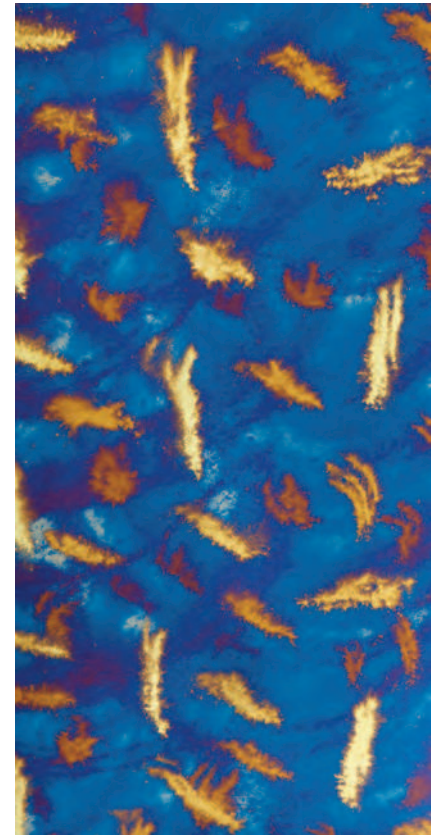
## Specchi nel Tempo

1.Bianco e Nero 2.Grigio Argento 3.Meteora 4.Saturno 5.Antico Veneziano 6.Urano 7.Venere 8.Cometa 9.Iride 10.Apollo 11.Minerva  
12.Zeus





# Specchi da Arredamento



Vulcano 1220x2400 mm

Specchi colorati ottenuti per mezzo di argentature speciali, ad esplosione di colore, che determinano un effetto tridimensionale sulle superfici. Illimitato il campo di applicazione: finiture di interni, rivestimenti di soffitti, pareti, colonne, per le più svariate ambientazioni, inserimento in linee di mobili in stile e moderni, creazione di formelle e pannelli compositi.

Misure standard di produzione: lastre di 1220x2400 mm in spessore di 3, 4, 5 e 6 mm.  
Dati tecnici utili a pag.116 e 118.

# Specchi da Arredamento

These are coloured mirrors achieved with a special silvering technique, comparable to an explosion of colour which creates a three-dimensional effect on the surface. The range of application is almost unlimited: interior finishes, panelling for ceilings, walls and columns for a wide range of interiors, inserts for antique and modern furniture, plus composite panels and tiles.

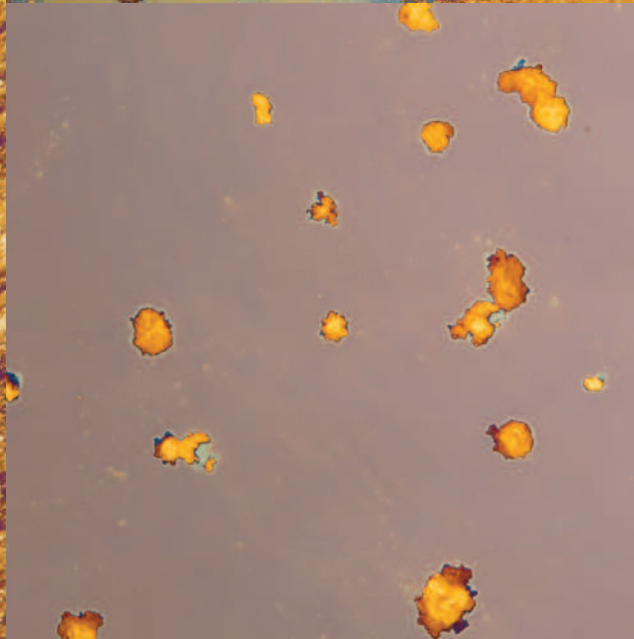
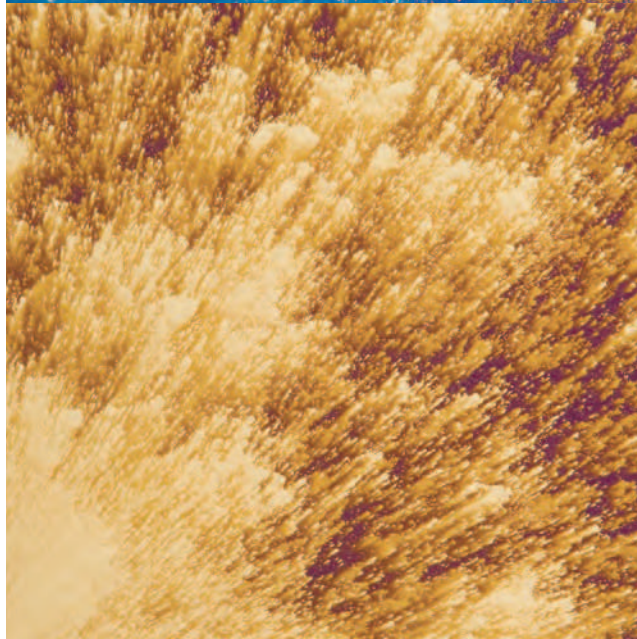
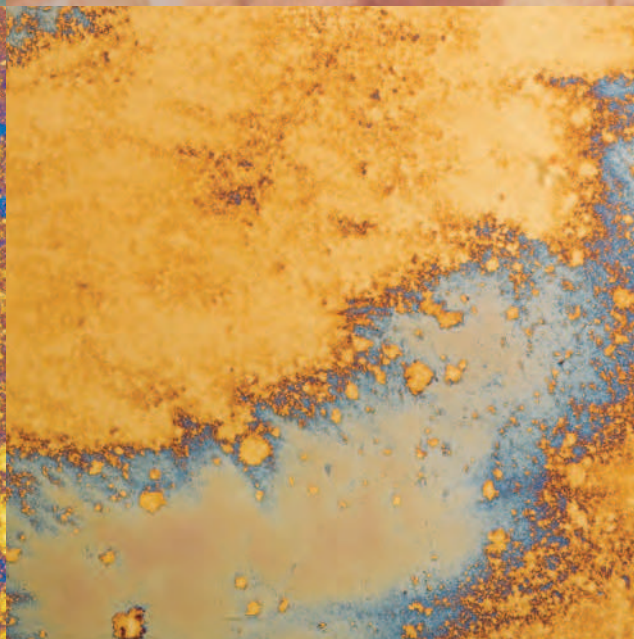
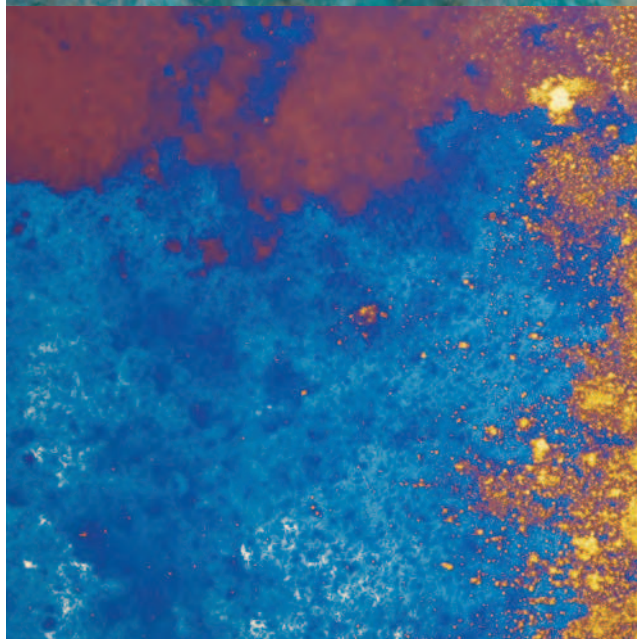
Standard production sizes: 1220x2400 mm sheets available in thicknesses of 3, 4, 5, and 6 mm.  
Please find useful technical advice on page 116 and 118.



The photographs show life-sized decorations



Le immagini mostrano decori a grandezza naturale



1  
Polvere di Stelle  
(Specchi da Arredamento)  
scale 1:1

2  
Arcobaleno  
(Specchi da Arredamento)  
scale 1:1

3  
Policromo  
(Specchi da Arredamento)  
scale 1:1

4  
Galassia  
(Specchi da Arredamento)  
scale 1:1

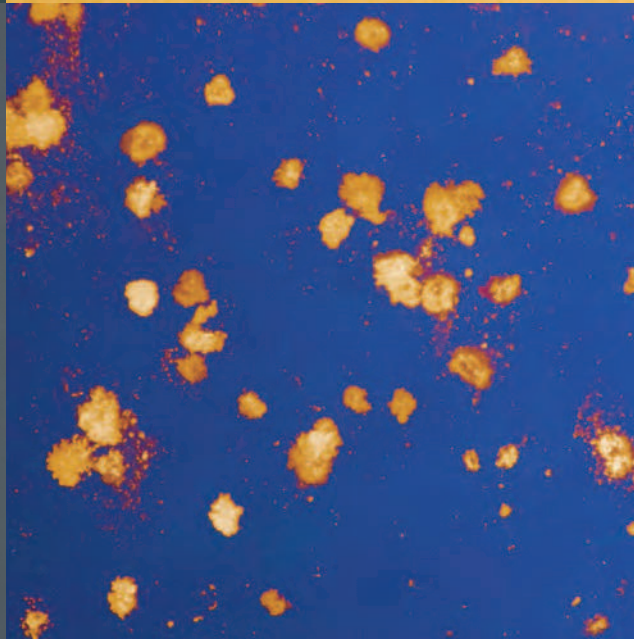
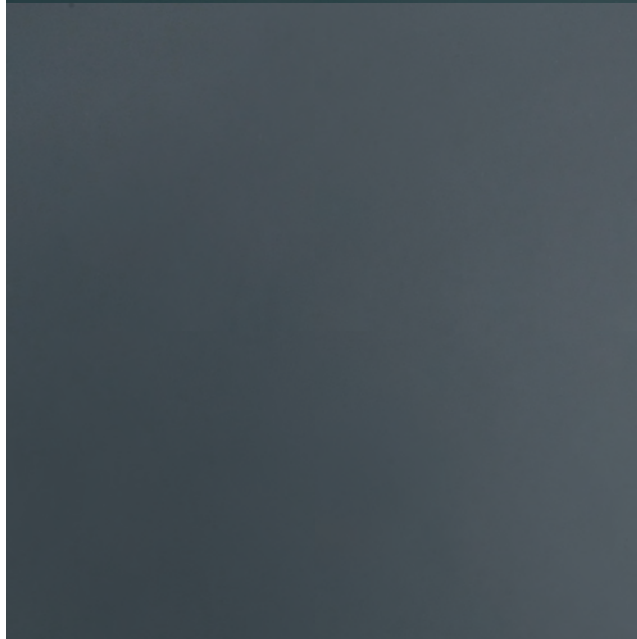
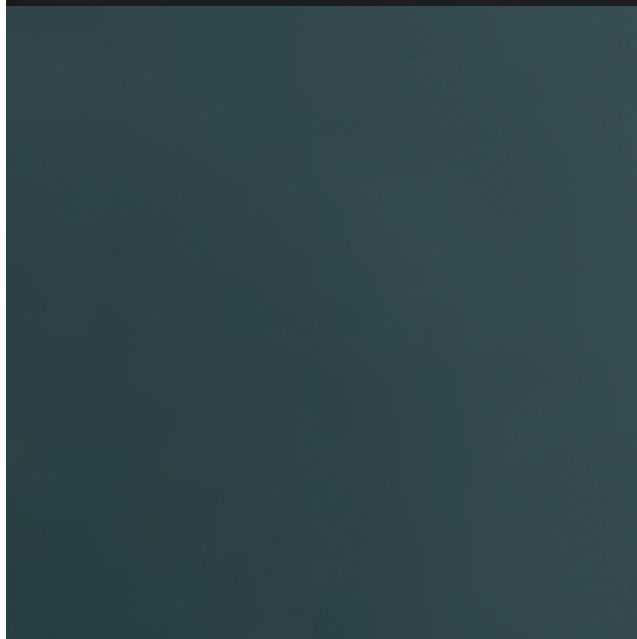
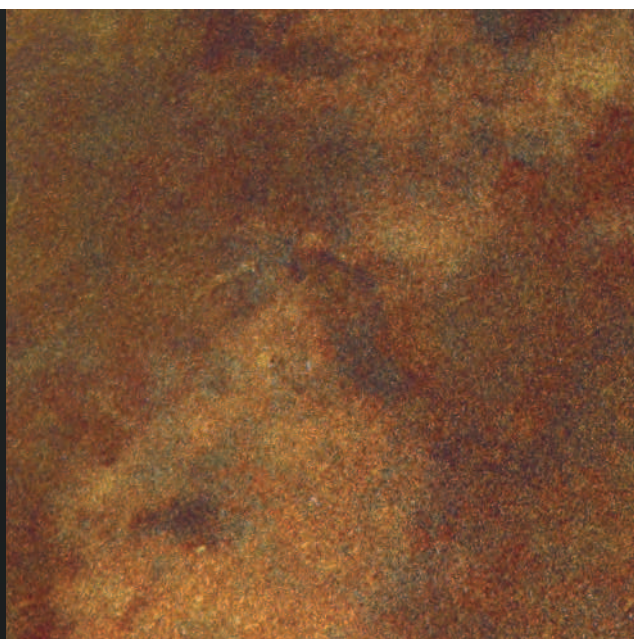
5  
Vulcano  
(Specchi da Arredamento)  
scale 1:1

6  
Policromo Cobalto  
(Specchi da Arredamento)  
scale 1:1



The photographs show life-sized decorations

Le immagini mostrano decori a grandezza naturale



7  
Polvere di Stelle Blu  
(Specchi da Arredamento)  
scale 1:1

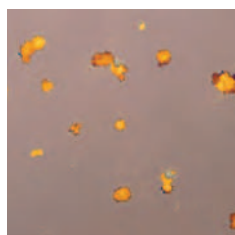
8  
Golden Antique  
(Specchi da Arredamento)  
scale 1:1

9  
Tramonto  
(Specchi da Arredamento)  
scale 1:1

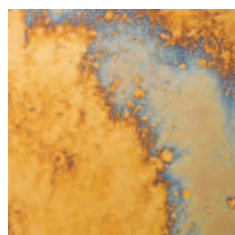
10  
Fumé  
(Specchi da Arredamento)  
scale 1:1

11  
Canna di Fucile  
(Specchi da Arredamento)  
scale 1:1

12  
Black Mirror  
(Specchi da Arredamento)  
scale 1:1



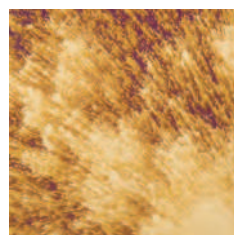
1



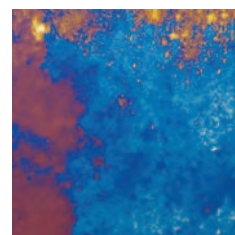
2



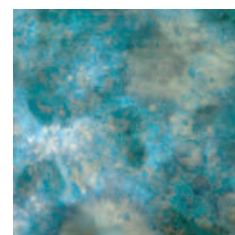
3



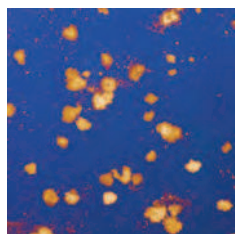
4



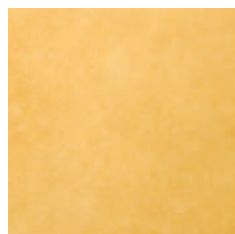
5



6



7



8



9



10



11



12

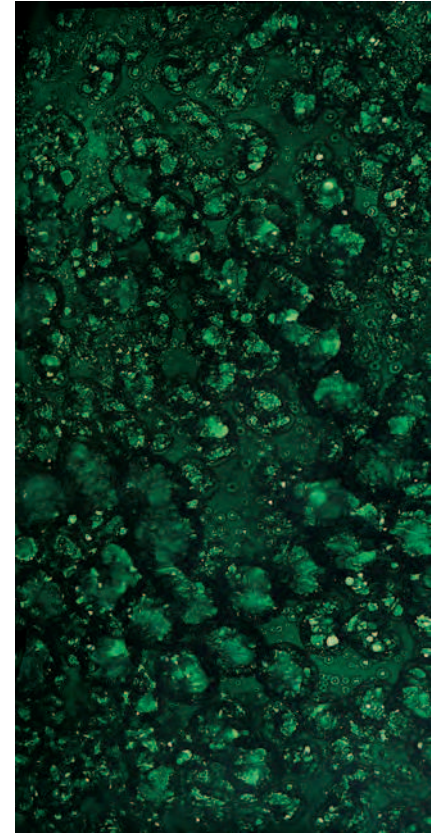
## Specchi da Arredamento

1.Polvere di Stelle 2.Arcobaleno 3.Policromo 4.Galassia 5.Vulcano 6.Policromo Cobalto 7.Polvere di Stelle Blu 8.Golden Antique 9.Tramonto  
10.Fumé 11.Canna di Fucile 12.Black Mirror





# Damasco



Smeraldo 1220x2400 mm

< Zaffiro



Linea ispirata al fascino antico e sempre nuovo dei pregiati tessuti damascati.  
Le lastre vengono decorate manualmente e rese ancor più preziose dalle tipiche argentature di Antique Mirror, ottenendo così un effetto cangiante e tridimensionale. Si inseriscono armoniosamente in diversi stili di arredamento d'interni.

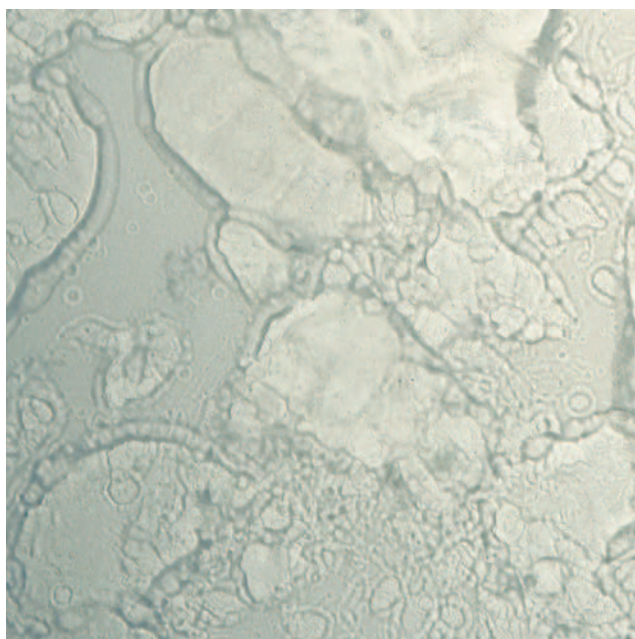
Misure standard di produzione: lastre di 1220x2400 mm in spessore di 4 mm.  
Dati tecnici utili a pag.116 e 118.

# Damasco

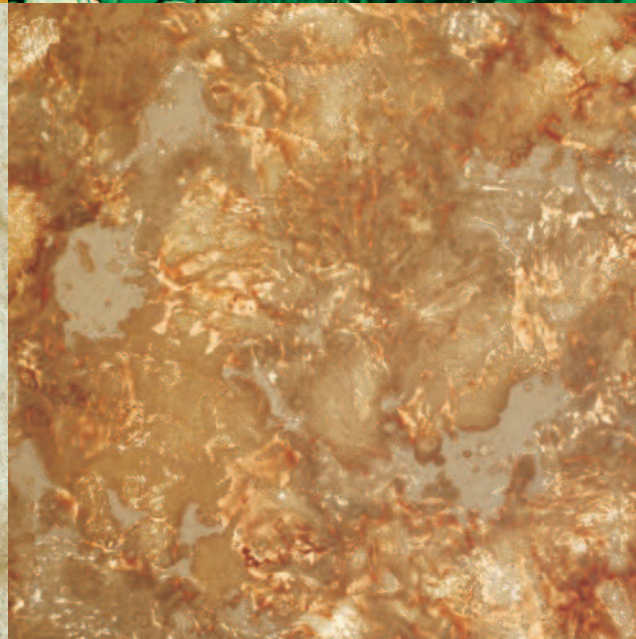
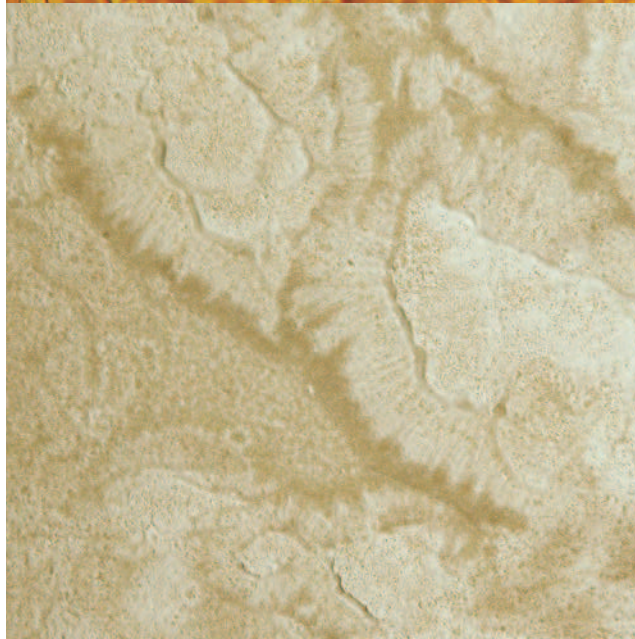
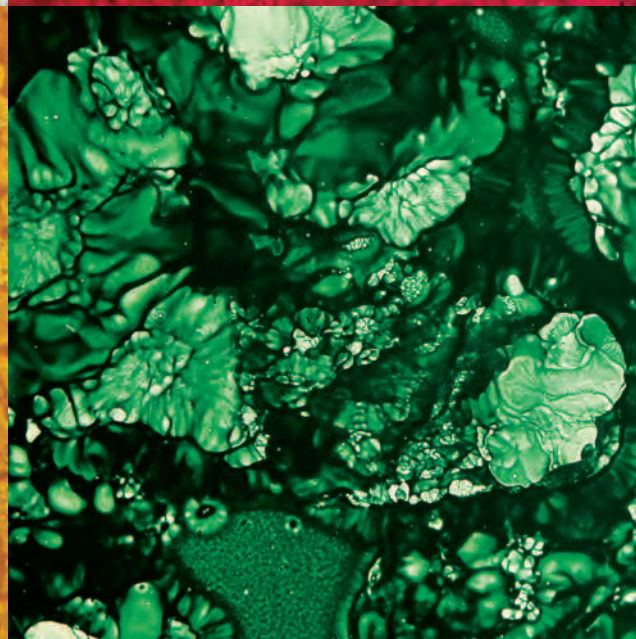
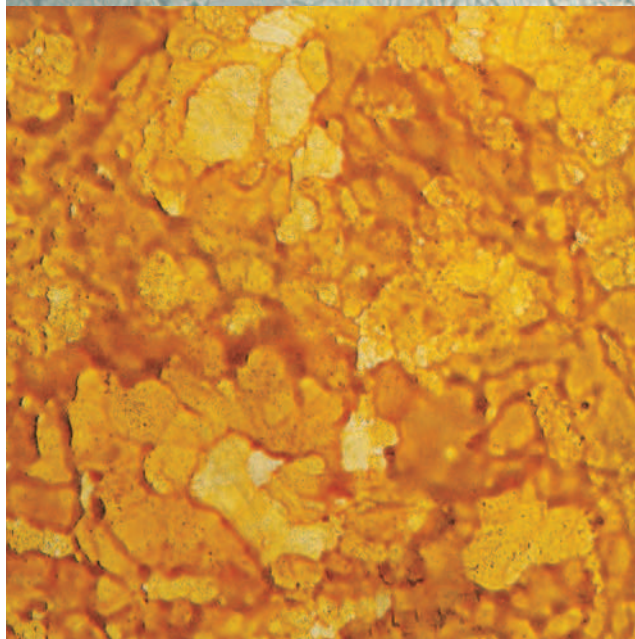
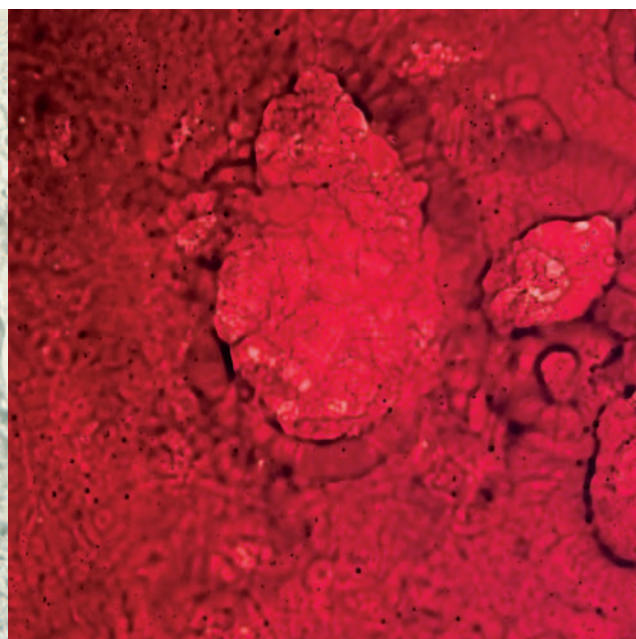
This line is inspired by the old yet eternally fresh appeal of fine damask fabrics.  
The sheets are hand decorated and distinctive Antique Mirror silvering creates an iridescent, three-dimensional effect which makes them even more exquisite. They blend in harmoniously with a variety of interior design styles.

Standard production sizes: 1220x2400 mm sheets, 4 mm thickness.  
Please find useful technical advice on page 116 and 118.

The photographs show life-sized decorations



Le immagini mostrano decori a grandezza naturale



1  
Oro  
(Damasco)  
scale 1:1



2  
Smeraldo  
(Damasco)  
scale 1:1



3  
Rubino  
(Damasco)  
scale 1:1

4  
Bianco  
(Damasco)  
scale 1:1

5  
Topazio  
(Damasco)  
scale 1:1

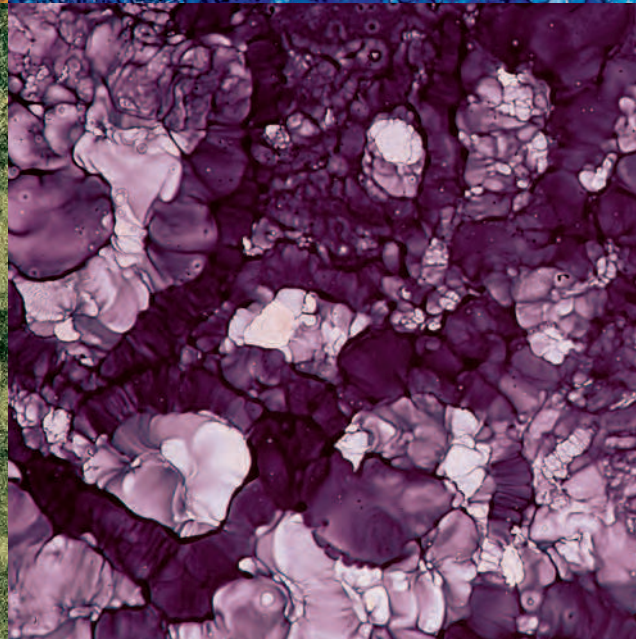
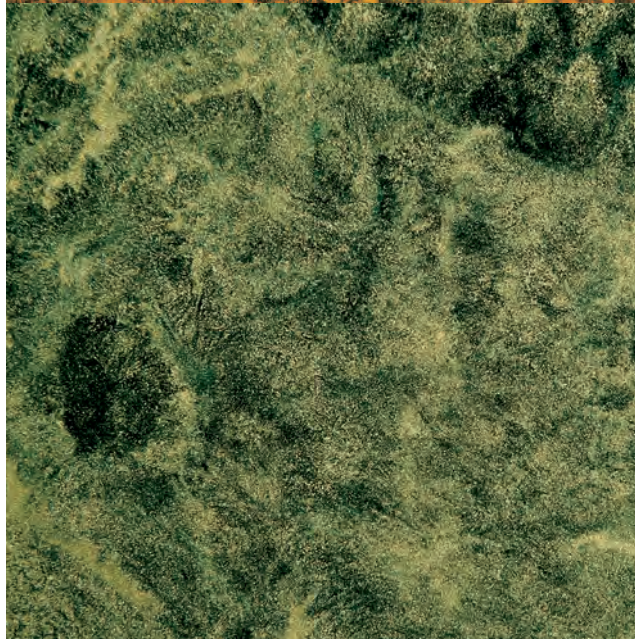
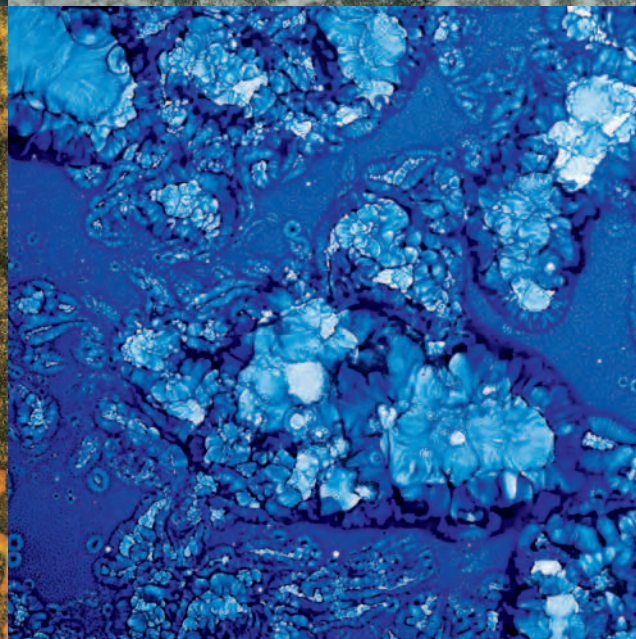
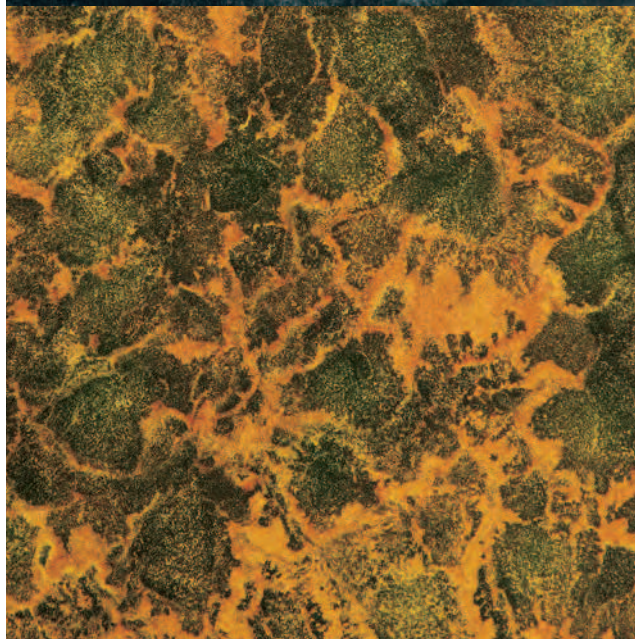
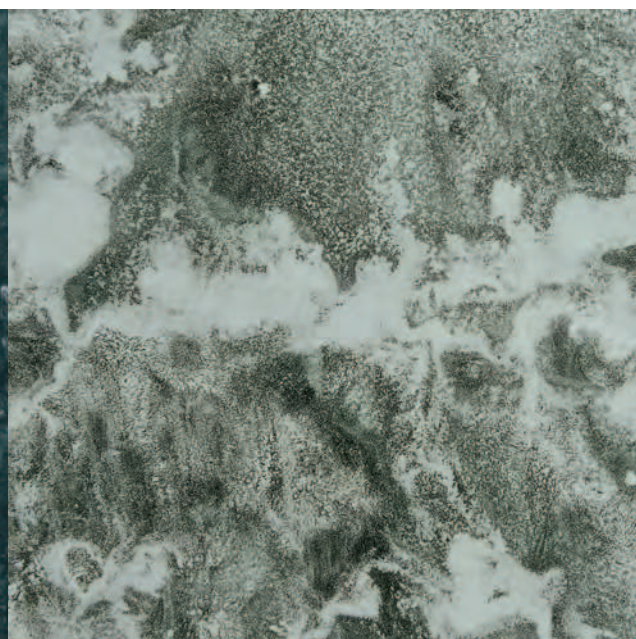
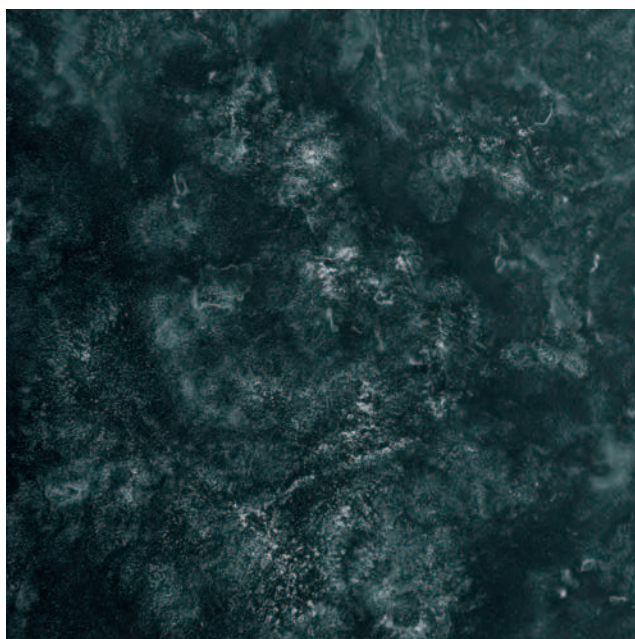


6  
Diamante  
(Damasco)  
scale 1:1



The photographs show life-sized decorations

Le immagini mostrano decori a grandezza naturale





7  
Ametista  
(Damasco)  
scale 1:1

8  
Zaffiro  
(Damasco)  
scale 1:1

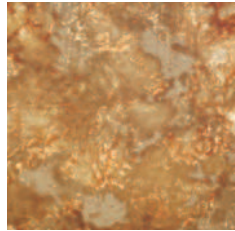
9  
Argento  
(Damasco)  
scale 1:1

10  
Perla  
(Damasco)  
scale 1:1

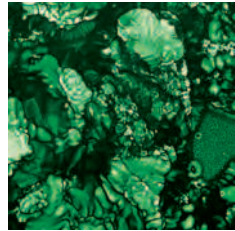
11  
Giallo  
(Damasco)  
scale 1:1

12  
Grigio  
(Damasco)  
scale 1:1

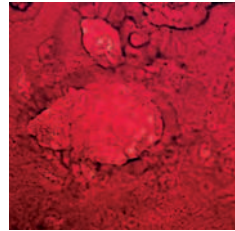




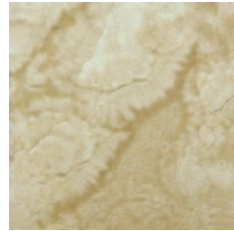
1



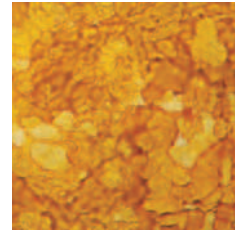
2



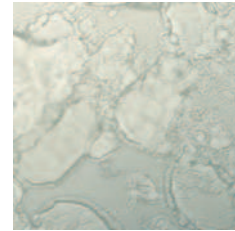
3



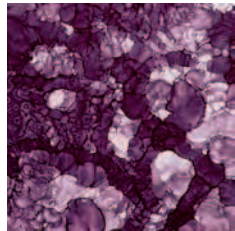
4



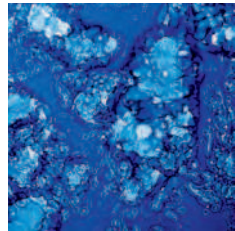
5



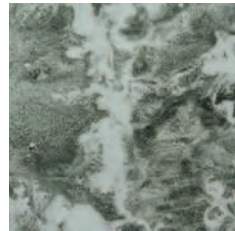
6



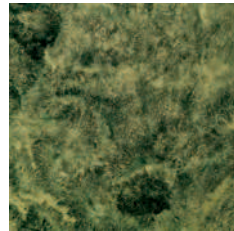
7



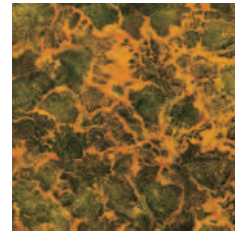
8



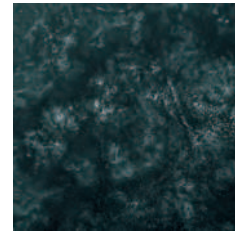
9



10



11



12

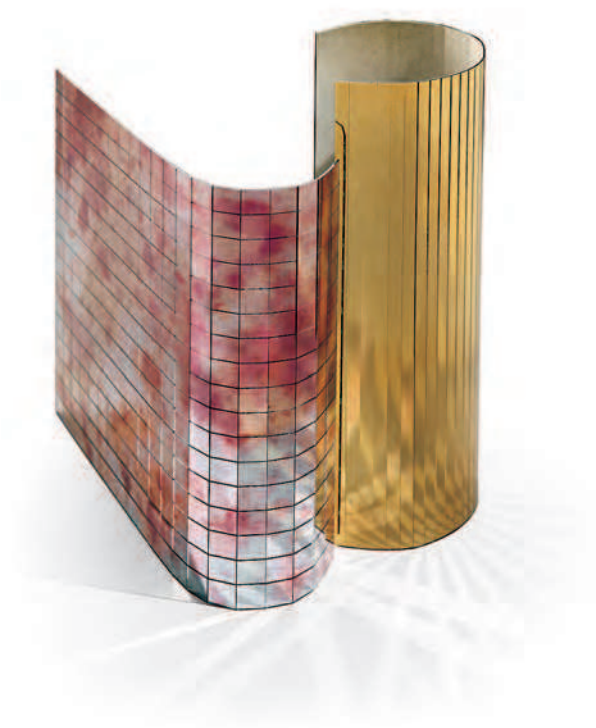
## Damasco

1.Oro 2.Smeraldo 3.Rubino 4.Bianco 5.Topazio 6.Diamante 7.Ametista 8.Zaffiro 9.Argento 10.Perla 11.Giallo 12.Grigio





# Mosaico



Policromo, Golden Antique 425x500 mm

< Damasco - Rubino



Antique Mirror ha sviluppato tessere di mosaico legate in pannelli, straordinariamente adatte per decorazioni, coperture di superfici piane o curve, di colonne e montanti, per disegnare forme ed immagini, incorniciare, foderare interni o donare tocchi di colore ad oggetti, indumenti ed accessori.  
I pannelli sono realizzabili in una gamma incredibilmente vasta di colori e moduli.

Misure standard di produzione: pannelli di 425x500 mm, in spessore di 2 mm, con taglio di mm 12,5x50.  
Dati tecnici utili a pag.116 e 120.

# Mosaico Specchi

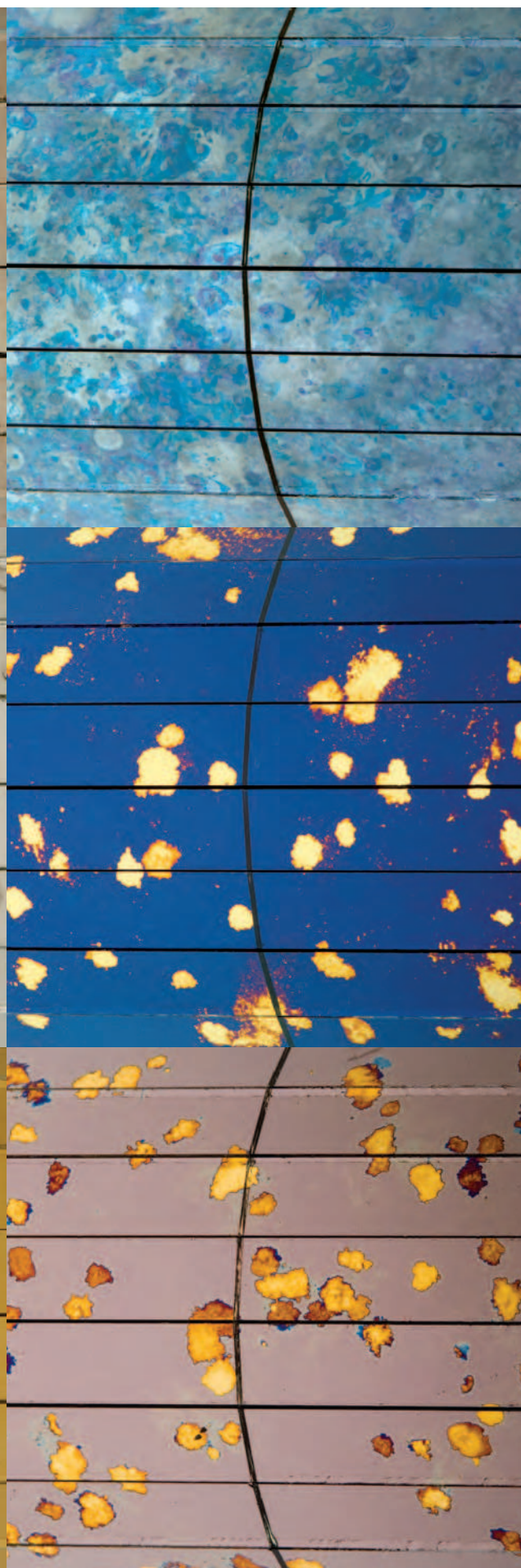
Antique Mirror has developed mosaic tiles assembled in panels. These are particularly suitable for decorations, covering flat or curved surfaces, pillars and stanchions or for creating images and shapes, framing, lining interiors but also to add a touch of colour to objects, garments and accessories.  
The panels can be manufactured in a wide range of colours and different cuts.

Standard production sizes: panel 425x500 mm, 2 mm thickness, cut size 12,5x50 mm.  
Please find useful technical advice on page 116 and 120.

The photographs show life-sized decorations



Le immagini mostrano decori a grandezza naturale



1  
Polvere di Stelle  
(Mosaico Specchi)  
scale 1:1



2  
Polvere di Stelle Blu  
(Mosaico Specchi)  
scale 1:1



3  
Policromo Cobalto  
(Mosaico Specchi)  
scale 1:1



4  
Golden Antique  
(Mosaico Specchi)  
scale 1:1

5  
Grigio Argento  
(Mosaico Specchi)  
scale 1:1

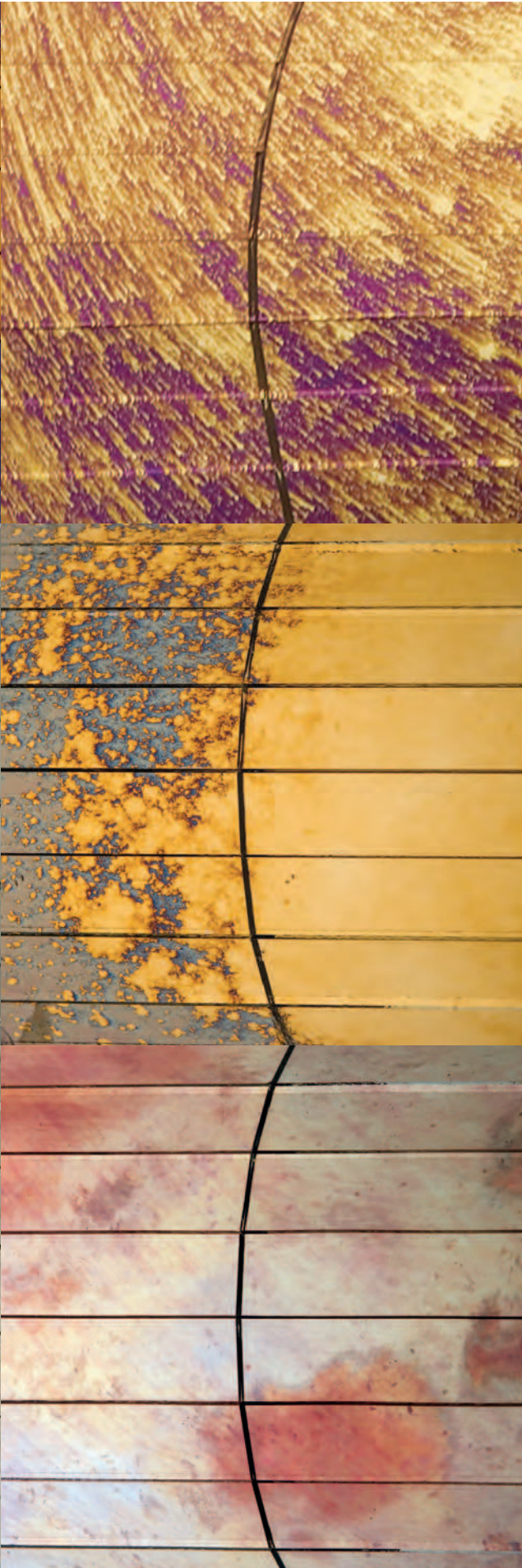
6  
Antico Veneziano  
(Mosaico Specchi)  
scale 1:1



The photographs show life-sized decorations



Le immagini mostrano decori a grandezza naturale



7  
Policromo  
(Mosaico Specchi)  
scale 1:1



8  
Arcobaleno  
(Mosaico Specchi)  
scale 1:1



9  
Galassia  
(Mosaico Specchi)  
scale 1:1



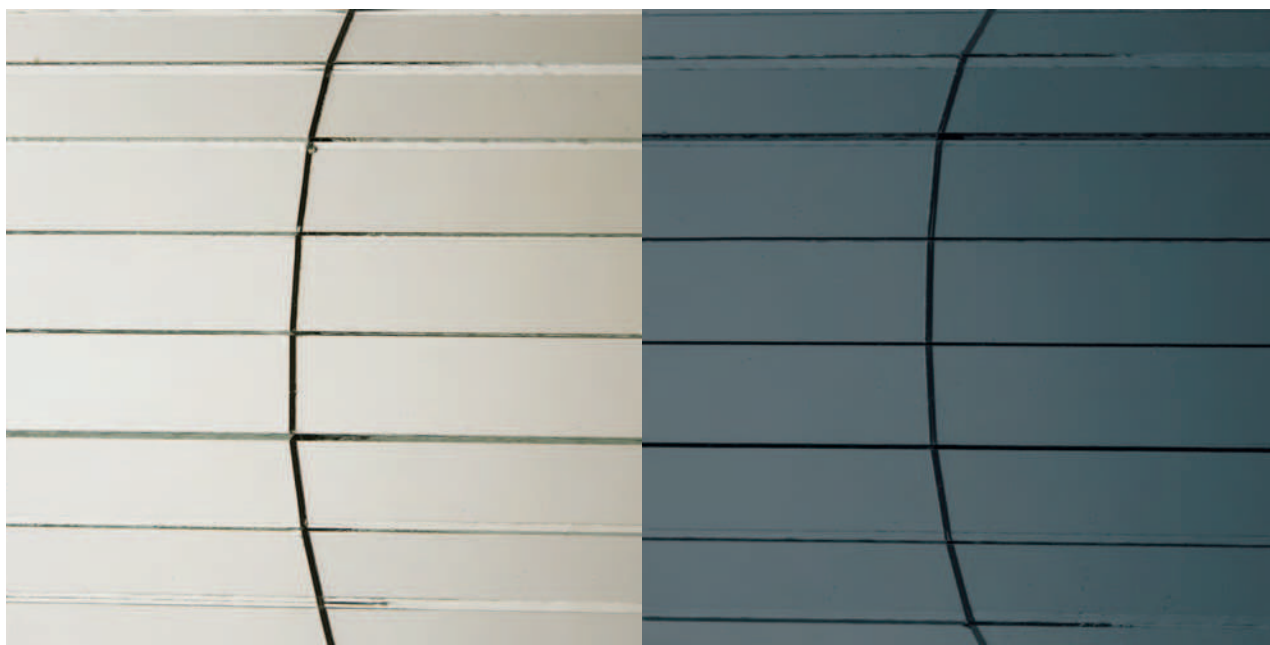
10  
Bianco e Nero  
(Mosaico Specchi)  
scale 1:1

11  
Saturno  
(Mosaico Specchi)  
scale 1:1

12  
Vulcano  
(Mosaico Specchi)  
scale 1:1

The photographs show life-sized decorations

Le immagini mostrano decori a grandezza naturale





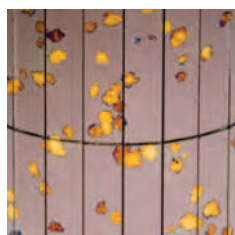
13  
Fumé  
(Mosaico Specchi)

scale 1:1

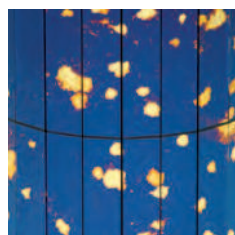


14  
Specchio Bianco  
(Mosaico Specchi)

scale 1:1



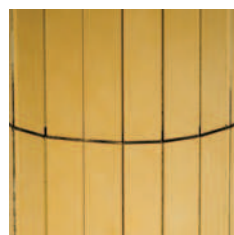
1



2



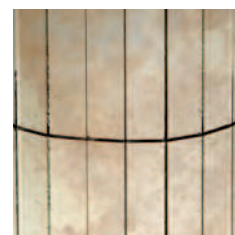
3



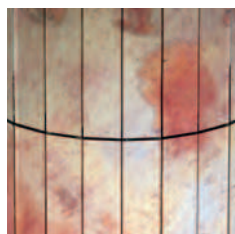
4



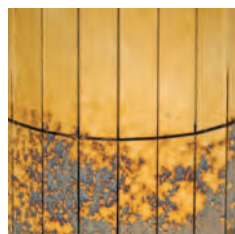
5



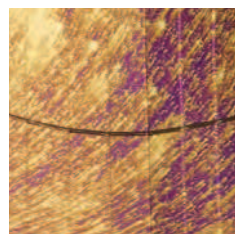
6



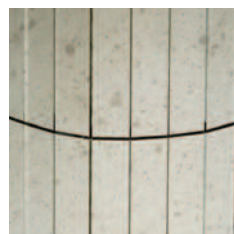
7



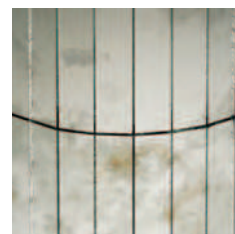
8



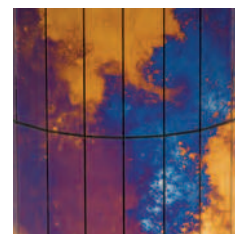
9



10



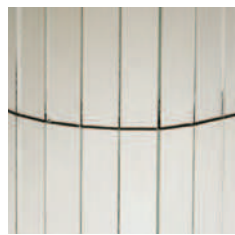
11



12



13



14

## Mosaico Specchi

1.Polvere di Stelle 2.Polvere di Stelle Blu 3.Policromo Cobalto 4.Golden Antique 5.Grigio Argento 6.Antico Veneziano 7.Policromo  
8.Arcobaleno 9.Galassia 10.Bianco e Nero 11.Saturno 12.Vulcano 13.Fumé 14.Specchio Bianco

Antique Mirror ha sviluppato tessere di mosaico legate in pannelli, straordinariamente adatte per decorazioni, coperture di superfici piane o curve, di colonne e montanti, per disegnare forme ed immagini, incorniciare, foderare interni o donare tocchi di colore ad oggetti, indumenti ed accessori.  
I pannelli sono realizzabili in una gamma incredibilmente vasta di colori e moduli.

Misure standard di produzione: pannelli di 425x500 mm, in spessore di 2 mm, con taglio di mm 12,5x50.  
Dati tecnici utili a pag.116 e 120.

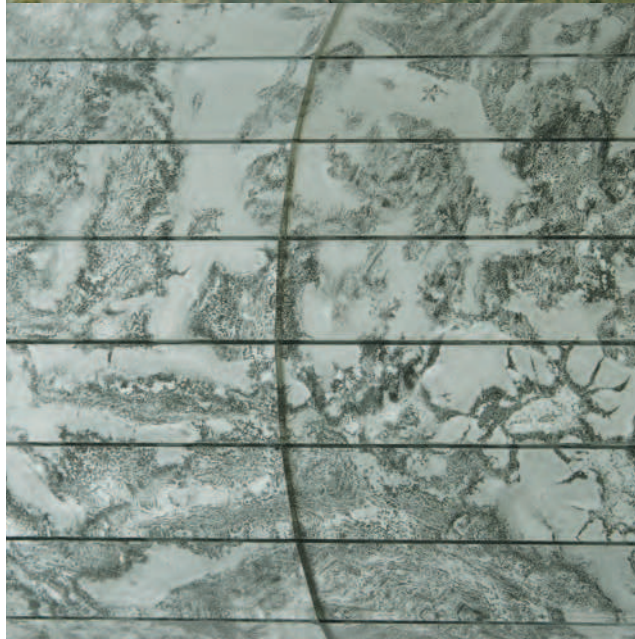
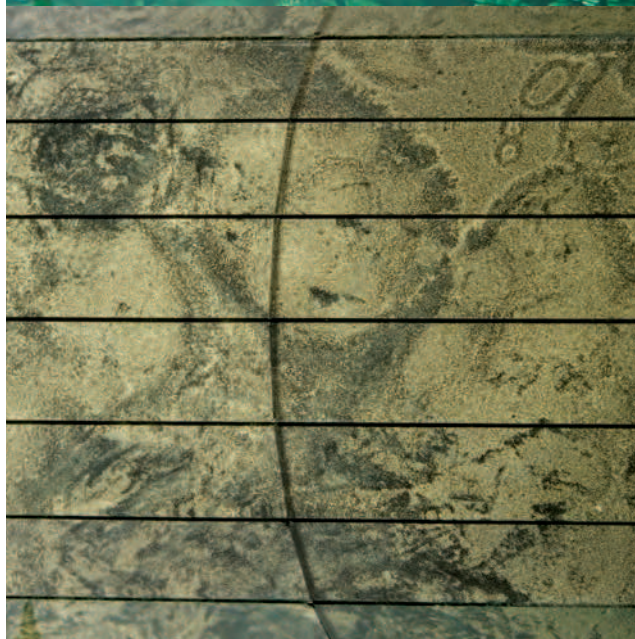
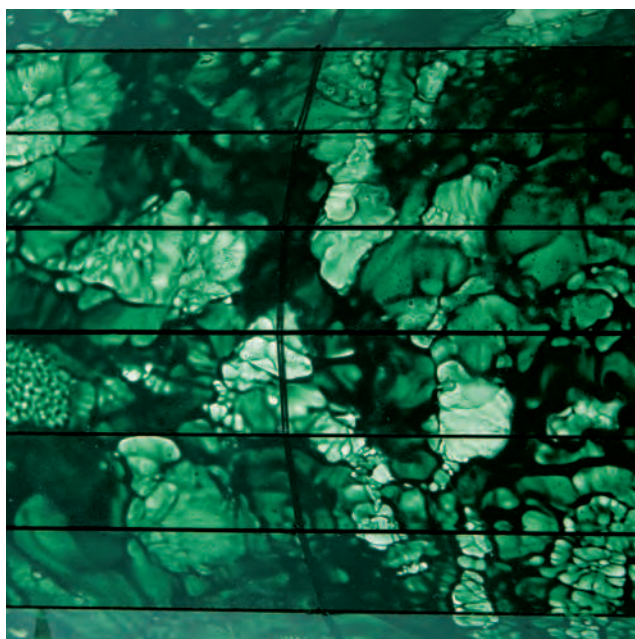
# Mosaico Damasco

Antique Mirror has developed mosaic tiles assembled in panels. These are particularly suitable for decorations, covering flat or curved surfaces, pillars and stanchions or for creating images and shapes, framing, lining interiors but also to add a touch of colour to objects, garments and accessories.  
The panels can be manufactured in a wide range of colours and different cuts.

Standard production sizes: panel 425x500 mm, 2 mm thickness, cut size 12,5x50 mm.  
Please find useful technical advice on page 116 and 120.



The photographs show life-sized decorations



Le immagini mostrano decori a grandezza naturale



1  
Oro  
(Mosaico Damasco)  
scale 1:1

2  
Bianco  
(Mosaico Damasco)  
scale 1:1

3  
Rubino  
(Mosaico Damasco)  
scale 1:1

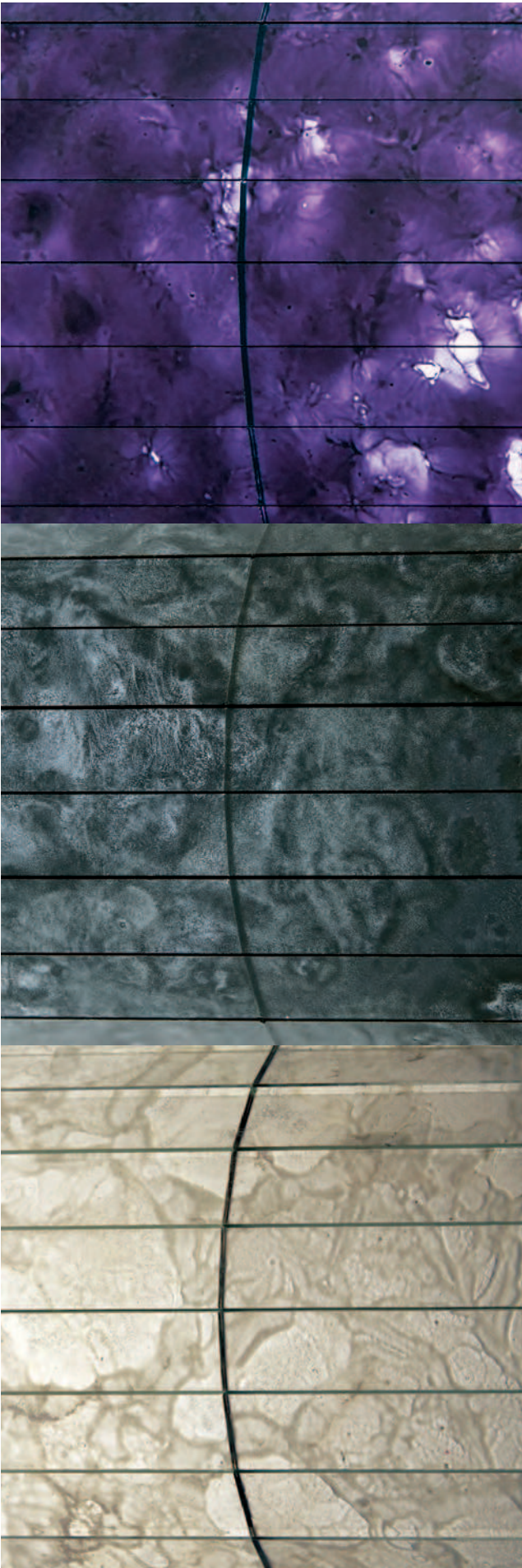
4  
Argento  
(Mosaico Damasco)  
scale 1:1

5  
Perla  
(Mosaico Damasco)  
scale 1:1

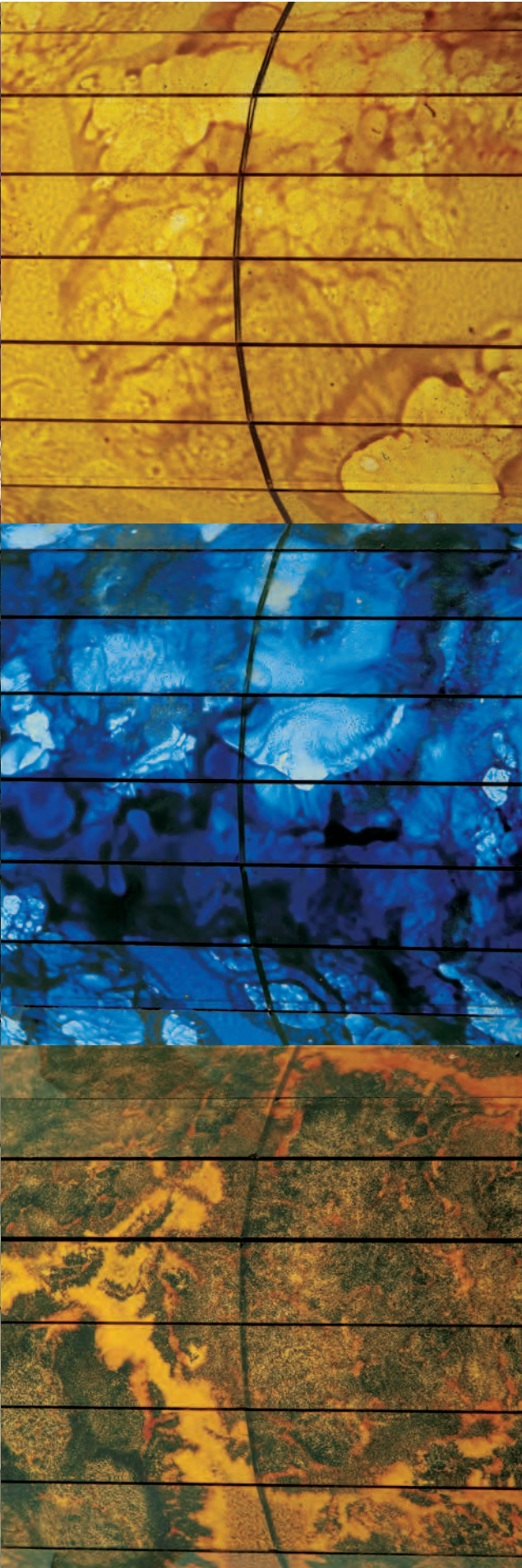
6  
Smeraldo  
(Mosaico Damasco)  
scale 1:1



The photographs show life-sized decorations



Le immagini mostrano decori a grandezza naturale





7  
Giallo  
(Mosaico Damasco)  
scale 1:1



8  
Zaffiro  
(Mosaico Damasco)  
scale 1:1



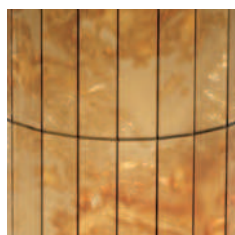
9  
Topazio  
(Mosaico Damasco)  
scale 1:1



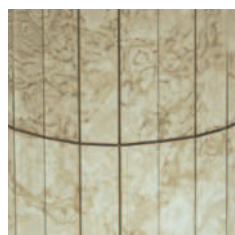
10  
Diamante  
(Mosaico Damasco)  
scale 1:1

11  
Grigio  
(Mosaico Damasco)  
scale 1:1

12  
Ametista  
(Mosaico Damasco)  
scale 1:1



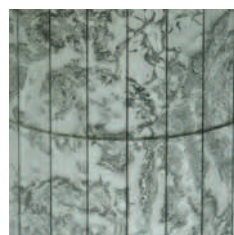
1



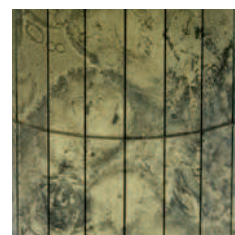
2



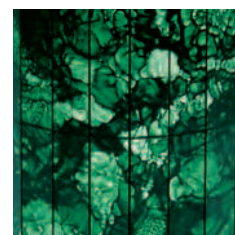
3



4



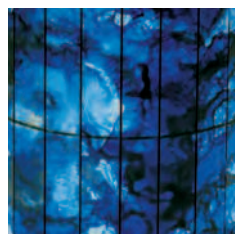
5



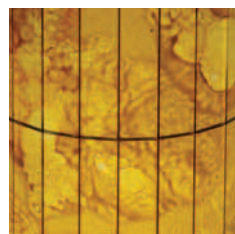
6



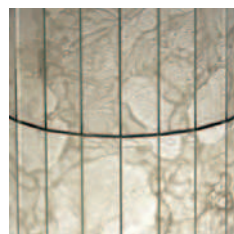
7



8



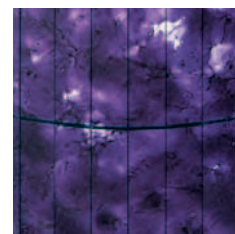
9



10



11



12

## Mosaico Damasco

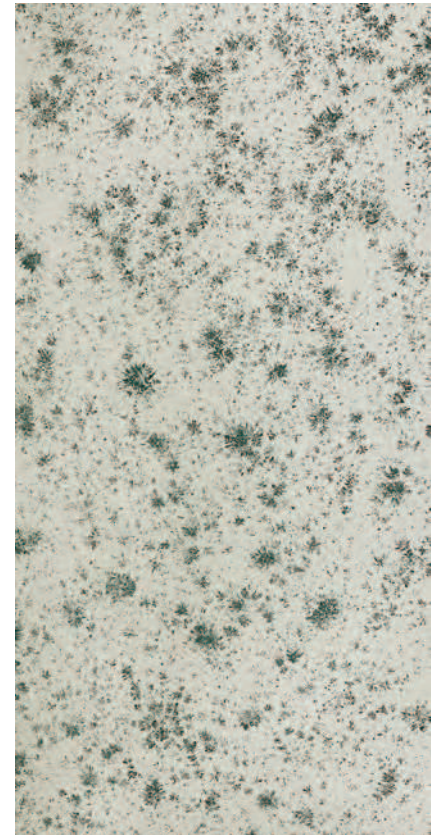
1.Oro 2.Bianco 3.Rubino 4.Argento 5.Perla 6.Smeraldo 7.Giallo 8.Zaffiro 9.Topazio 10.Diamante 11.Grigio 12.Ametista







# Arabesque



Maldive 1220x2400 mm

Specchi monolitici con superficie variegata dall'alternanza di colori satinati all'argento,  
di cui contrastano l'effetto movimentando la riflettenza.

Misure standard di produzione: Lastre di 1220x2400 mm, in spessore di 4 mm.  
Dati tecnici utili a pag.116 e 118.

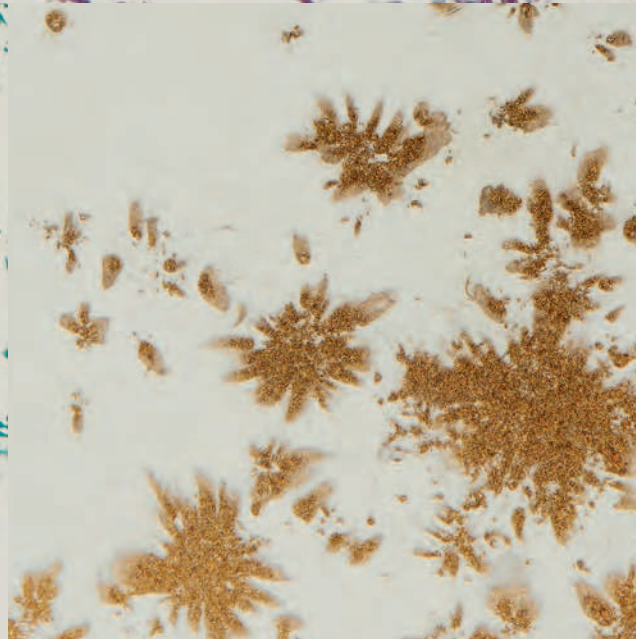
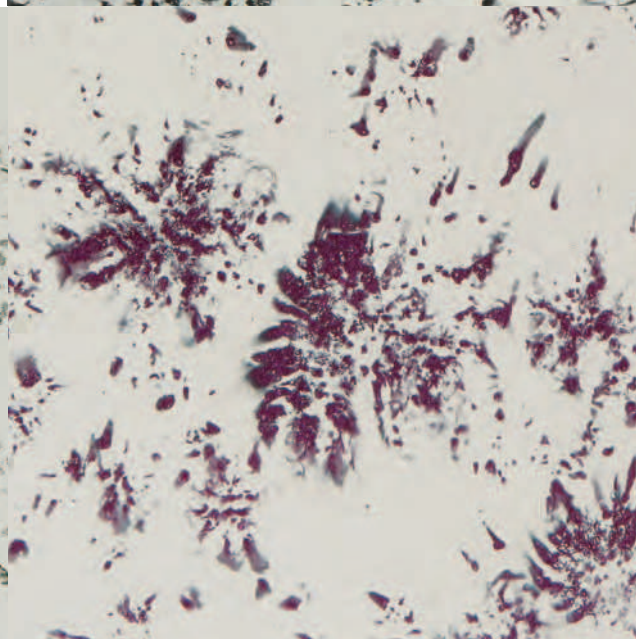
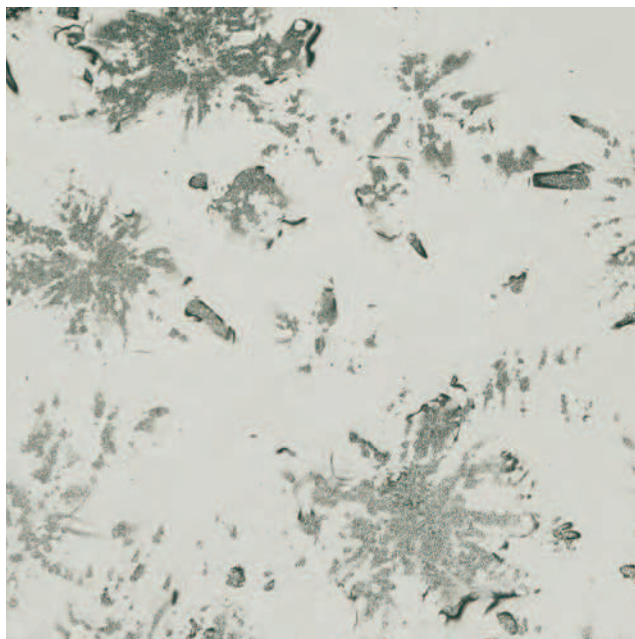
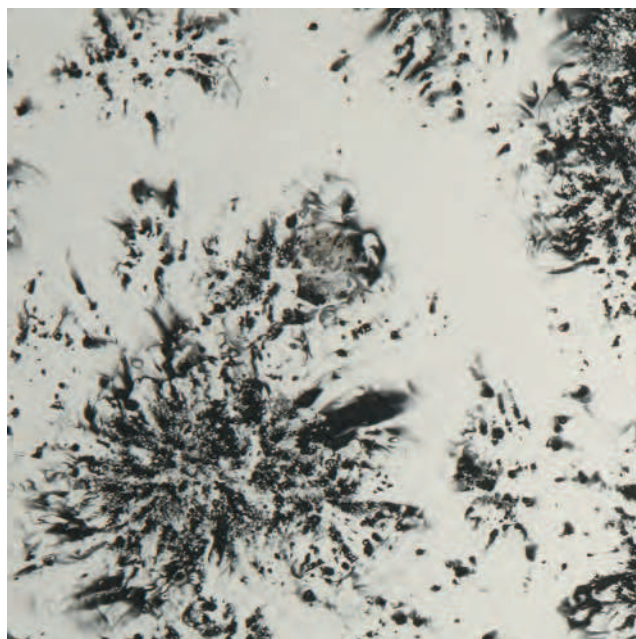
# Arabesque

The monolithic mirrors have a top coating that alternates from satinized multi-colours into silver;  
the contrast of both changes the reflectance.

Standard production sizes: 1220x2400 mm sheets, 4 mm thickness.  
Please find useful technical advice on page 116 and 118.

The photographs show life-sized decorations

Le immagini mostrano decori a grandezza naturale





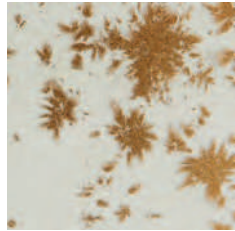
1  
Azzorre  
(Arabesque)  
scale 1:1

2  
Ibiza  
(Arabesque)  
scale 1:1

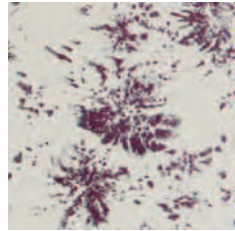
3  
Lanzarote  
(Arabesque)  
scale 1:1

4  
Maldive  
(Arabesque)  
scale 1:1

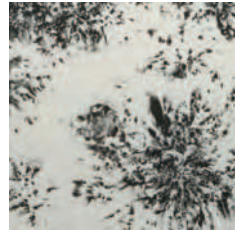
5  
Santorini  
(Arabesque)  
scale 1:1



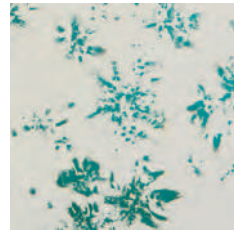
1



2



3



4



5

## Arabesque

1.Azzorre 2.Ibiza 3.Lanzarote 4.Maldive 5.Santorini

Specchi stratificati con effetto “double-face”, decorati da spruzzi di colore trasparenti che consentono a porzioni di luce di filtrare attraverso la superficie specchiata; si possono applicare sia al naturale che con fonte di luce posta sul retro, che diminuisce la riflettanza enfatizzando il colore.

Misure standard di produzione: Lastre di 1220x2400 mm, in spessore di 3+3 mm.  
Dati tecnici utili a pag.116 e 118.

# Arabesque Double-Face

The laminated mirrors are “double-face”, decorated with sprinkles of transparent color, which allows partial light to come through the silvered surface. Backlighting can be installed, alternating the reflectance and underlining the colour of the sheet if desired.

Standard production sizes: 1220x2400 mm sheets, 3+3 mm thickness.  
Please find useful technical advice on page 116 and 118.



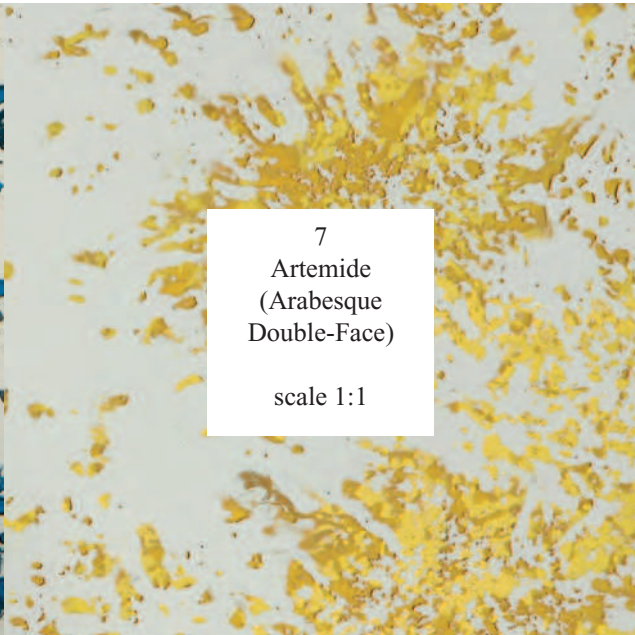
The photographs show life-sized decorations

Le immagini mostrano decori a grandezza naturale





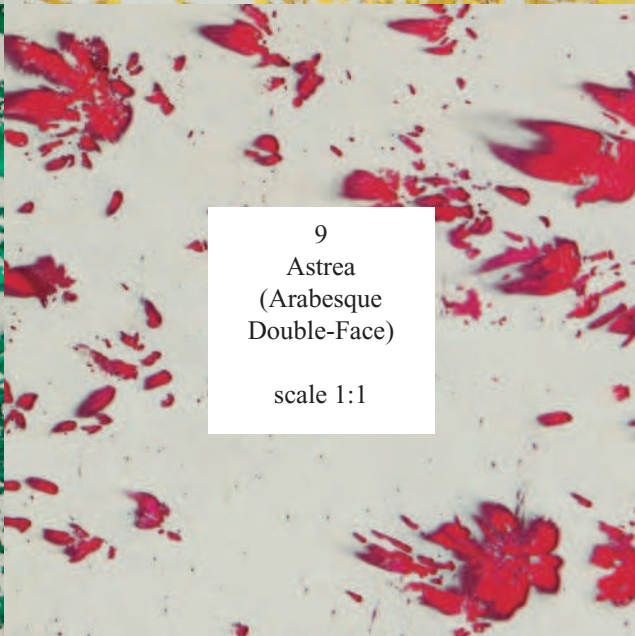
6  
Afrodite  
(Arabesque  
Double-Face)  
  
scale 1:1



7  
Artemide  
(Arabesque  
Double-Face)  
  
scale 1:1

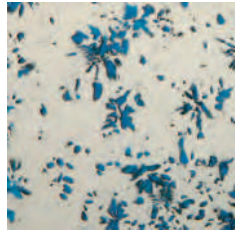


8  
Atena  
(Arabesque  
Double-Face)  
  
scale 1:1

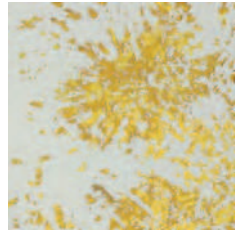


9  
Astrea  
(Arabesque  
Double-Face)  
  
scale 1:1

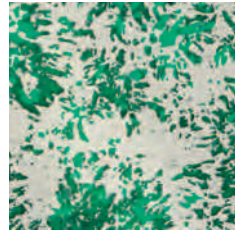




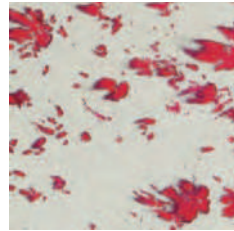
6



7



8



9

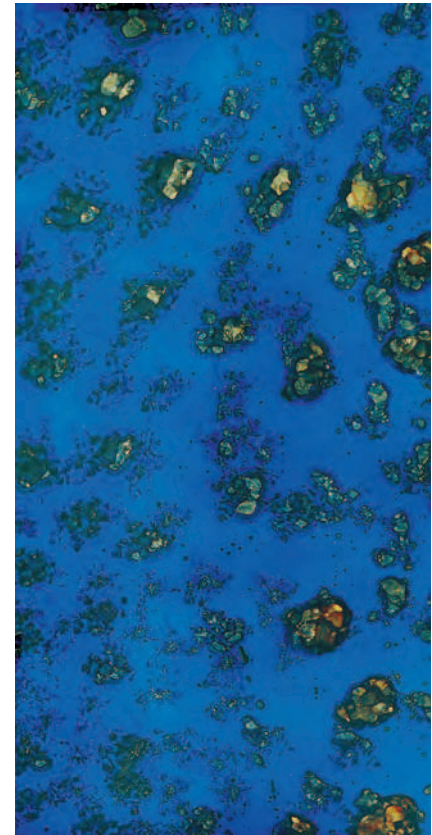
## Arabesque Double-Face

6.Afrodite 7.Artemide 8.Atena 9.Astrea





# Vetroseta



Venezia 1220x2400 mm

Lastre trasparenti, decorate a mano con fantasie astratte multicolori.  
Inserite in porte di legno, in pareti scorrevoli, in ante di mobili, si trasformano in eleganti elementi di arredo.

Misure standard di produzione: (1-2-3-4-5) Lastre di 1220x2400 mm in spessore di 4 mm.  
(6-7-8-9) - su float satinato - Lastre di 1070x2400 mm in spessore di 4 mm.  
Dati tecnici utili a pag.116 e 118.

# Vetroseta

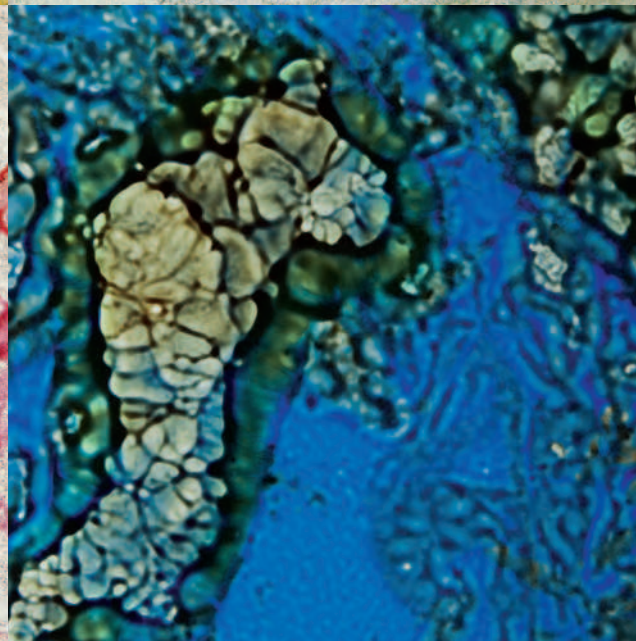
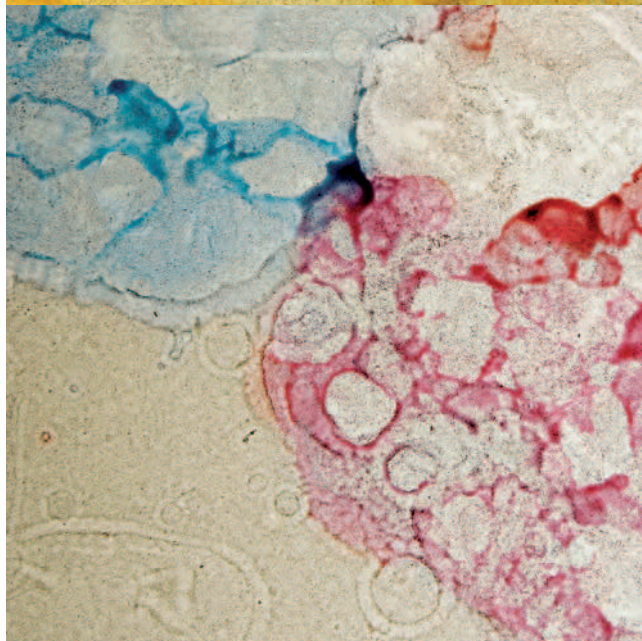
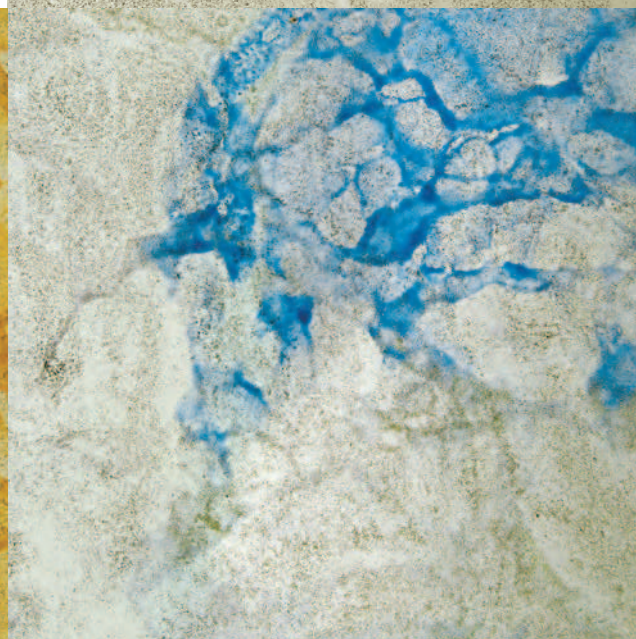
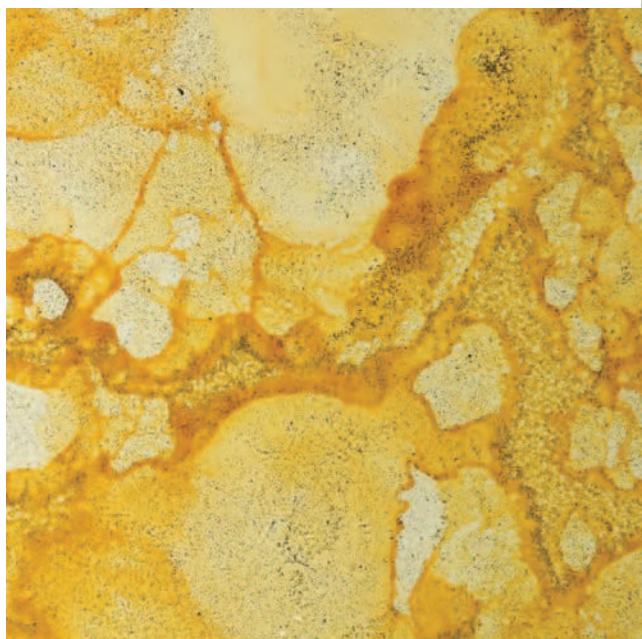
These sheets are transparent. Hand decorated with abstract, multicoloured patterns.  
When mounted in wooden doors, sliding wall panels and furniture doors they become elegant elements of interior design.

Standard production sizes: (1-2-3-4-5) 1220x2400 mm sheets, 4 mm thickness.  
(6-7-8-9) - float satin - 1070x2400 mm sheets, 4 mm thickness.  
Please find useful technical advice on page 116 and 118.

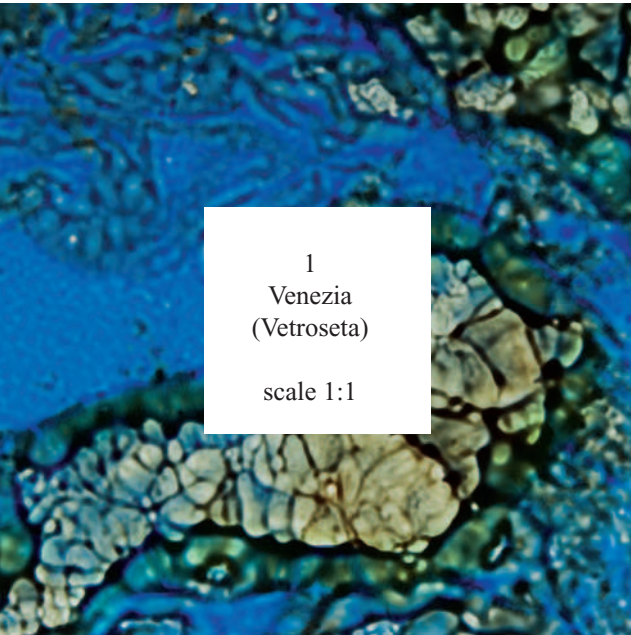


The photographs show life-sized decorations

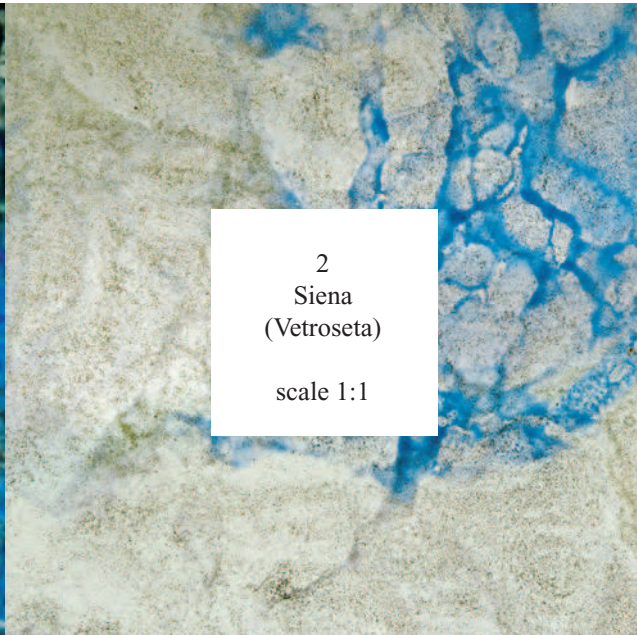
Le immagini mostrano decori a grandezza naturale



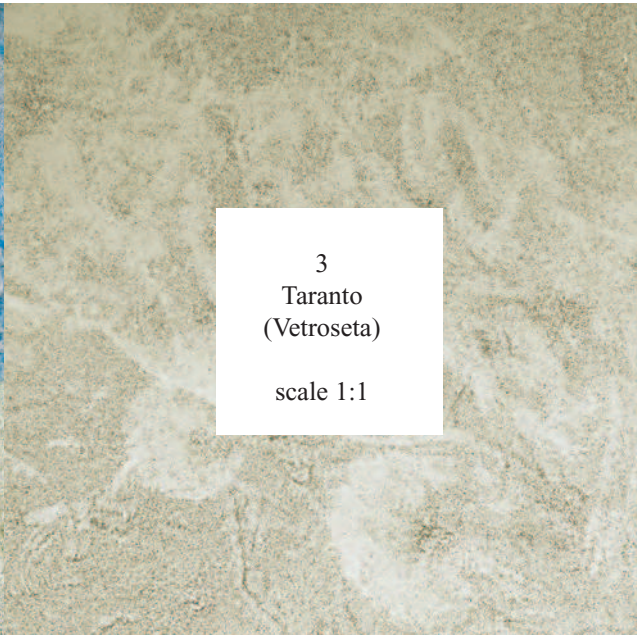




1  
Venezia  
(Vetroseta)  
scale 1:1



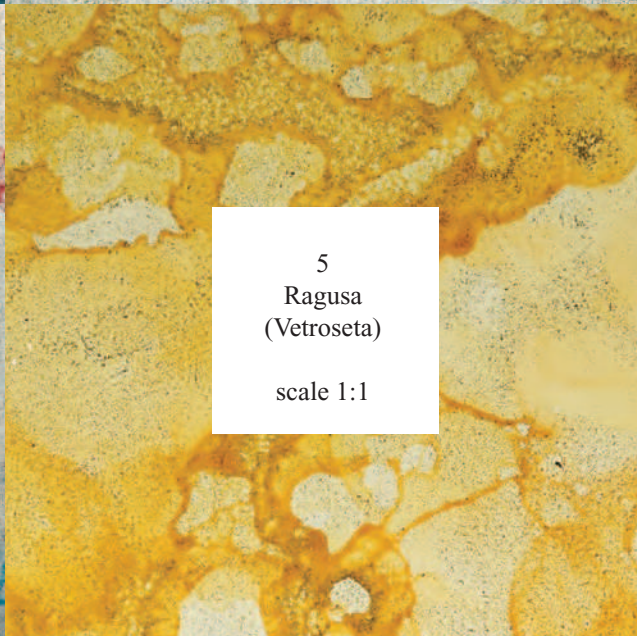
2  
Siena  
(Vetroseta)  
scale 1:1



3  
Taranto  
(Vetroseta)  
scale 1:1



4  
Como  
(Vetroseta)  
scale 1:1

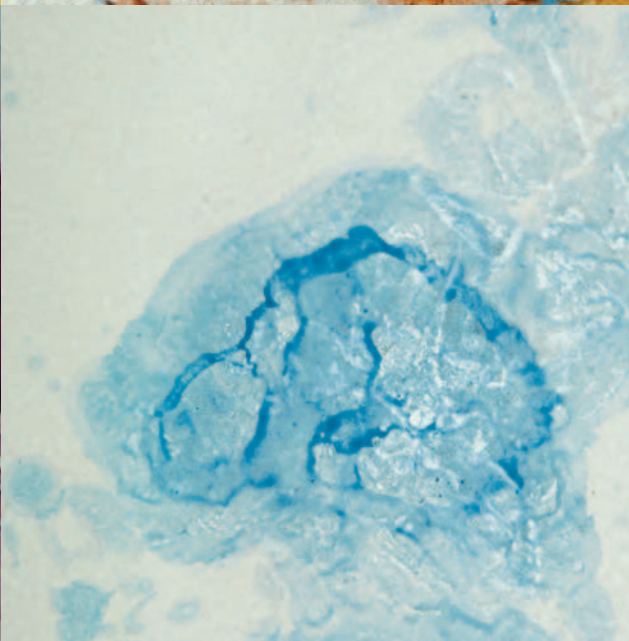
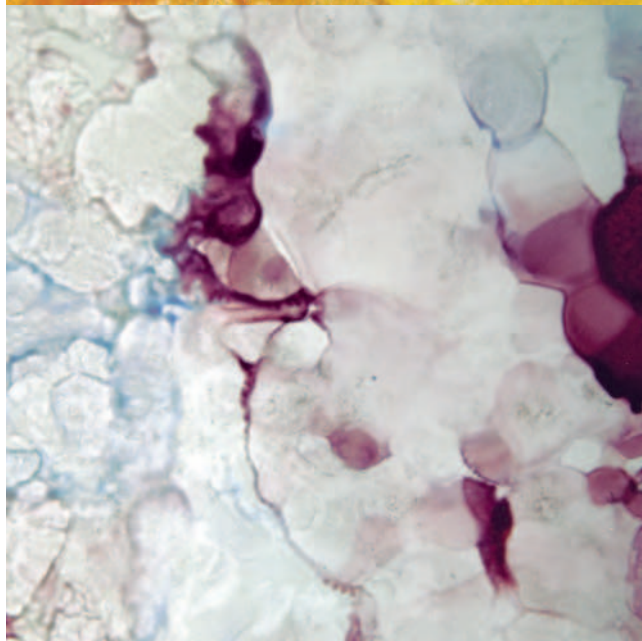
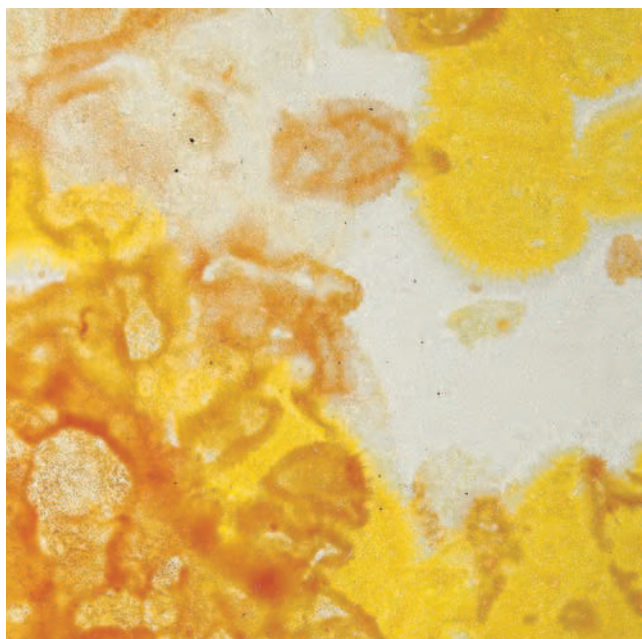


5  
Ragusa  
(Vetroseta)  
scale 1:1

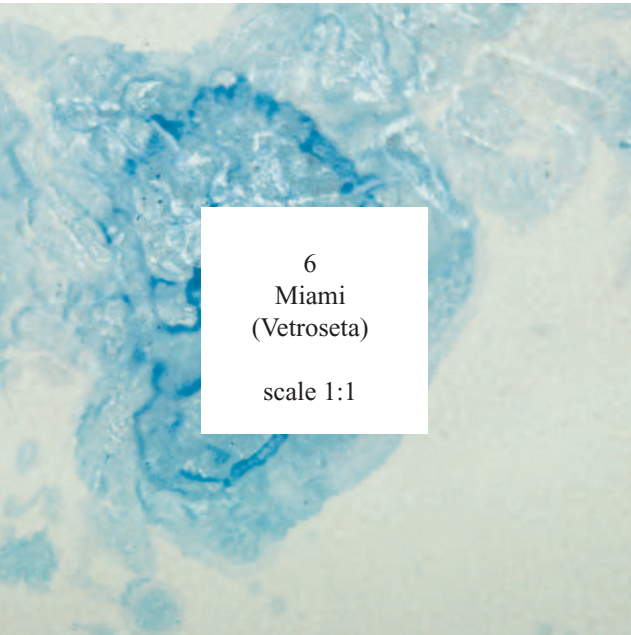


The photographs show life-sized decorations

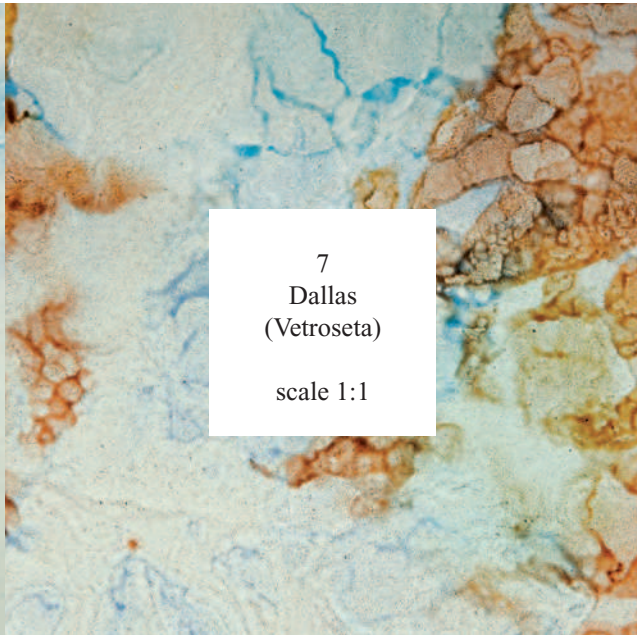
Le immagini mostrano decori a grandezza naturale



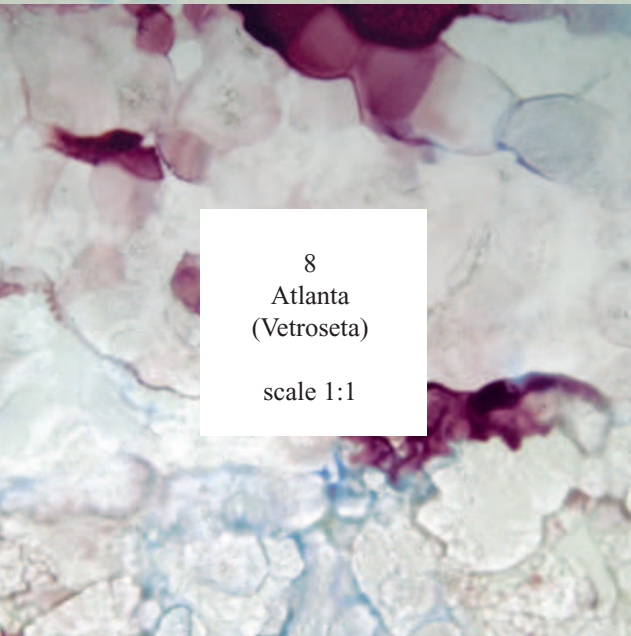




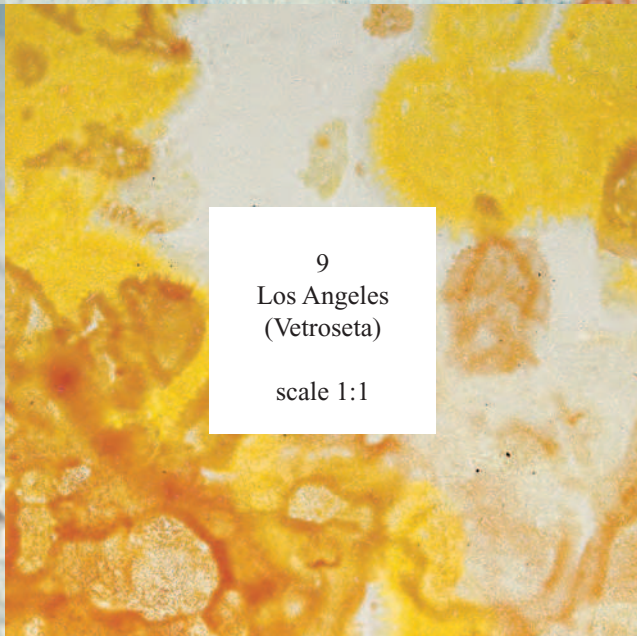
6  
Miami  
(Vetroseta)  
scale 1:1



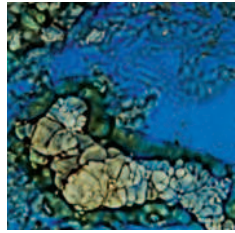
7  
Dallas  
(Vetroseta)  
scale 1:1



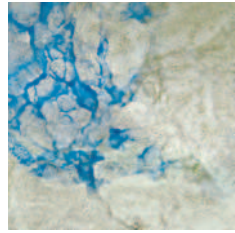
8  
Atlanta  
(Vetroseta)  
scale 1:1



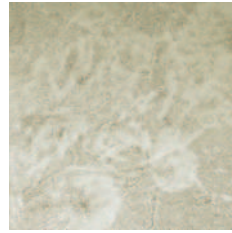
9  
Los Angeles  
(Vetroseta)  
scale 1:1



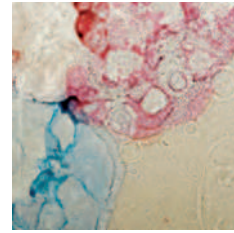
1



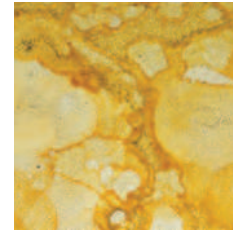
2



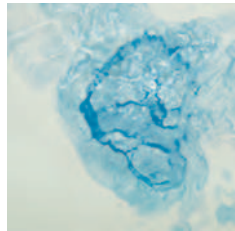
3



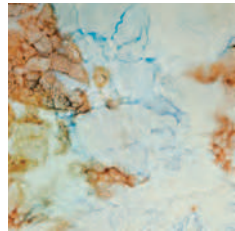
4



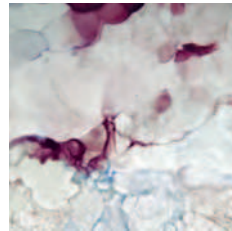
5



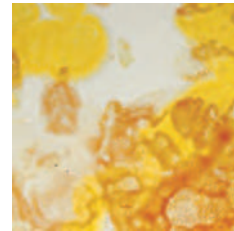
6



7



8



9

## Vetroseta

1.Venezia 2.Siena 3.Taranto 4.Como 5.Ragusa 6.Miami 7.Dallas 8.Atlanta 9.Los Angeles



